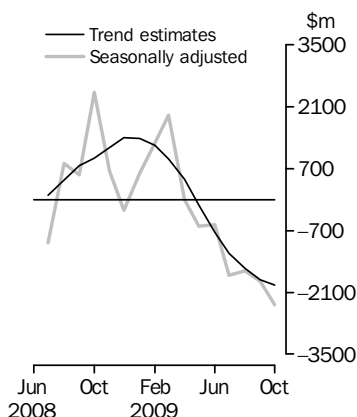


INTERNATIONAL TRADE IN GOODS AND SERVICES

AUSTRALIA

EMBARGO: 11.30AM (CANBERRA TIME) WED 9 DEC 2009

Balance on Goods and Services



KEY FIGURES

	Aug 2009	Sep 2009	Oct 2009	Sep 09 to Oct 09 %
	\$m	\$m	\$m	
BALANCE ON GOODS AND SERVICES				
Trend estimates	-1 557	-1 814	-1 936	..
Seasonally adjusted	-1 616	-1 845	-2 379	..
CREDITS (Exports of goods & services)				
Trend estimates	19 597	19 484	19 532	—
Seasonally adjusted	19 303	20 171	19 468	-3
DEBITS (Imports of goods & services)				
Trend estimates	21 154	21 297	21 469	1
Seasonally adjusted	20 919	22 017	21 847	-1

.. not applicable

— nil or rounded to zero (including null cells)

KEY POINTS

BALANCE ON GOODS AND SERVICES

- The trend estimate of the *balance on goods and services* was a deficit of \$1,936m in October 2009, an increase of \$122m on a revised deficit in September 2009.
- In seasonally adjusted terms, the *balance on goods and services* was a deficit of \$2,379m in October 2009, an increase of \$534m on a revised deficit in September 2009.

CREDITS (EXPORTS OF GOODS & SERVICES)

- Seasonally adjusted, *goods and services credits* fell \$703m (3%) to \$19,468m. *Non-rural goods* fell \$325m (3%) with the *coal, coke and briquettes* component down \$344m (12%), the *metal ores and minerals* component down \$267m (7%) and the *other mineral fuels* component up \$217m (18%). *Rural goods* fell \$156m (8%) and *non-monetary gold* fell \$235m (17%). *Services credits* rose \$31m (1%).

DEBITS (IMPORTS OF GOODS & SERVICES)

- Seasonally adjusted, *goods and services debits* fell \$170m (1%) to \$21,847m. *Intermediate and other merchandise goods* fell \$207m (3%) with the *fuels and lubricants* component down \$236m (10%). *Non-monetary gold* fell \$66m (9%), *consumption goods* fell \$42m (1%) and *capital goods* rose \$35m (1%). *Services debits* rose \$111m (2%).

INQUIRIES

For further information contact Selvi Sekhar on Canberra (02) 6252 5540 for goods, and Karen McGuigan on Canberra (02) 6252 5415 for services.

NOTES

FORTHCOMING ISSUES

ISSUE	RELEASE DATE
November 2009	7 January 2010
December 2009	3 February 2010
January 2010	4 March 2010
February 2010	1 April 2010
March 2010	6 May 2010
April 2010	3 June 2010



REVISIONS

Revisions have been made to incorporate the latest available data relating to merchandise trade. There were no revisions to the balance of payments series in original terms. Seasonally adjusted and trend series have been revised as the incorporation of estimates for the latest month results in revised seasonal factors under the concurrent seasonal adjustment methodology.

CHANGES TO EXPORT AND IMPORT STATISTICAL CODES

Statistical codes in the Australian Harmonized Export Commodity Classification (AHECC) and the Customs Tariff classifications will be revised with new codes coming into effect on 1 January 2010. The changes result from the introduction of new statistical codes for identifying ozone depleting substances and will only affect chapters 29 and 38. The changes will not impact directly on the presentation of statistics in this publication but will impact on detailed import and export statistics provided via ABS Client Services.

The *Australian Harmonized Export Commodity Classification (AHECC), Jan 2007* (cat. no. 1233.0) will be updated on the ABS web site on 17 December 2009. Revised pages for the Customs Tariff will be re-issued shortly by the Australian Customs and Border Protection Service. For further information contact the Classification Manager on (02) 6252 5409 or e-mail <international.trade@abs.gov.au>.

INTERNATIONAL TRADE IN SERVICES

International Trade in Services by Country, by State and by Detailed Services Category, Calendar Year, 2008–09 (cat. no. 5368.0.55.004) is released concurrently with this issue. The data cubes in this release contain trade in services credits and debits data on a BPM6 basis for country and country groups and state by calendar years. Table 9 International trade in services, credits and debits, detailed service by year is ceased from this issue. For details see page 4.

Brian Pink
Australian Statistician

CONTENTS

page

Time series data	4
----------------------------	---

ANALYSIS

Analysis and comments	5
---------------------------------	---

TABLES

INTERNATIONAL TRADE IN GOODS AND SERVICES – BALANCE OF PAYMENTS BASIS

1 Goods and services, summary, seasonally adjusted and trend estimates	10
2 Goods and services, summary, original	11
3 Goods credits, original	12
4 Goods debits, original	13
5 Goods credits, seasonally adjusted	14
6 Goods debits, seasonally adjusted	15
7 Goods credits, trend estimates	16
8 Goods debits, trend estimates	17
9 Services, summary, original	18
10 Services, summary, seasonally adjusted and trend estimates	19
11 Services, original, quarterly	20

INTERNATIONAL MERCHANDISE TRADE – RECORDED TRADE BASIS

12 International merchandise exports, by commodity	21
13 International merchandise imports, by commodity	24
14 International merchandise trade, by country and country groups	27
15 International merchandise trade, by state	28

OTHER TABLES

16 Period average exchange rates per Australian dollar	29
17 Summary of revisions, goods and services, original	30

OTHER INFORMATION

Explanatory Notes	31
Appendix – Related articles	37

TIME SERIES DATA

TIME SERIES DATA

Data is available free on the ABS web site include longer time series of tables in this publication and the additional spreadsheets and data cubes listed below.

- 31 Merchandise exports by Broad Economic Category (BEC)
- 32 Merchandise exports by industry of origin (ANZSIC)
- 33 Merchandise imports by Broad Economic Category (BEC)
- 34 Merchandise imports by Balance of Payments Broad Economic Category (BoPBEC)
- 35 Merchandise imports by industry of origin (ANZSIC)
- 36 Merchandise exports, state by country and country groups
- 37 Merchandise imports, state by country and country groups
- 91 Monthly seasonal adjustment factors and forward factors for 12 months.

TRADE IN SERVICES DATA CUBES

Trade in Services data cubes are usually updated on an annual basis - with the March issue of this publication for calendar year (cat. no. 5368.0.55.004) and with the September issue for financial year (cat. no. 5368.0.55.003).

The calendar year data cubes on a BPM6 basis are released concurrently with this issue. Table 9 International trade in services, credits and debits, detailed service by year is ceased from this issue and the data with latest revisions is available in time series spreadsheets Tables 11a and 11b of the *International Trade in Goods and Services* (cat. no. 5368.0).

The following tables are included in both sets of data cubes:

- 1 International trade in services, credits, state by year
- 2 International trade in services, credits, year by state
- 3 International trade in services, debits, state by year
- 4 International trade in services, debits, year by state
- 5 International trade in services, credits, year by country and service
- 6 International trade in services, credits, service by year and by country
- 7 International trade in services, debits, year by country and service
- 8 International trade in services, debits, service by year and by country
- 10 International trade in services, credits, year by country and travel service
- 11 International trade in services, debits, year by country and travel service
- 12 International trade in services, credits, education related travel, by educational sector, by type of expenditure by year.

ANALYSIS AND COMMENTS

BALANCE ON GOODS AND SERVICES

The trend estimate of the balance on goods and services was a deficit of \$1,936m in October 2009, an increase of \$122m (7%) on a revised deficit in September 2009.

In seasonally adjusted terms, the balance on goods and services was a deficit of \$2,379m in October 2009, an increase of \$534m (29%) on a revised deficit in September 2009.

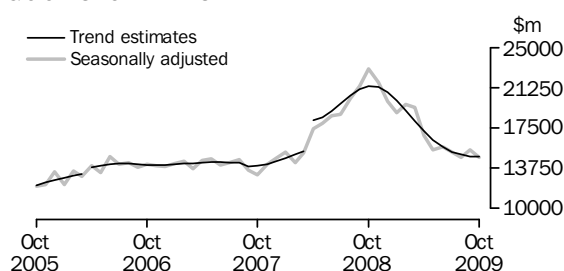
EXPORTS OF GOODS AND SERVICES

Between September 2009 and October 2009 the trend estimate of goods and services credits rose \$48m to \$19,532m.

In seasonally adjusted terms, goods and services credits fell \$703m (3%) to \$19,468m. Non-rural goods fell \$325m (3%) and rural goods fell \$156m (8%) and non-monetary gold fell \$235m (17%). Services credits rose \$31m (1%).

Exports of goods

GOODS CREDITS



(a) Trend breaks of \$500m to April 2006 and \$2,725m to April 2008 have been applied.

RURAL GOODS

In trend terms, exports of rural goods fell \$62m (3%) to \$1,937m.

In seasonally adjusted terms, exports of rural goods fell \$156m (8%) to \$1,859m.

The main components contributing to the fall in seasonally adjusted estimates were:

- other rural, down \$106m (12%)
- cereal grains and cereal preparations, down \$59m (14%).

NON-RURAL GOODS

In trend terms, exports of non-rural goods fell \$14m to \$11,776m.

In seasonally adjusted terms, exports of non-rural goods fell \$325m (3%) to \$11,732m.

The main components contributing to the fall in seasonally adjusted estimates were:

- coal, coke & briquettes, down \$344m (12%). In original terms, the metallurgical high rank coal fell \$345m (24%), with volumes down 12% and prices down 14%.
- metal ores and minerals, down \$267m (7%). In original terms, non-agglomerated iron ore fell \$193m (8%), with volumes up 1% and prices down 9%.

Partly offsetting these decreases was the other mineral fuels component, up \$217m (18%).

ANALYSIS AND COMMENTS *continued*

Exports of goods continued

NET EXPORTS OF GOODS UNDER MERCHANTING

In trend terms, net exports of goods under merchanting fell \$2m (10%) to \$18m.

In both original terms and seasonally adjusted terms, net exports of goods under merchanting fell \$18m (69%) to \$8m.

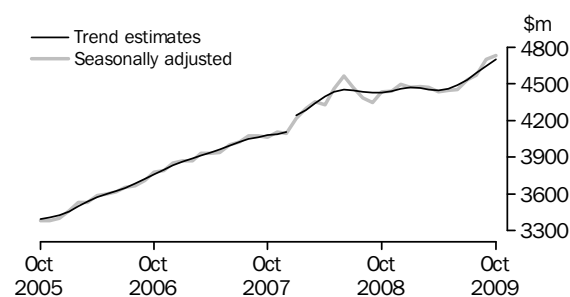
NON-MONETARY GOLD

In trend terms, exports of non-monetary gold rose \$75m (7%) to \$1,104m.

In both original terms and seasonally adjusted terms, non-monetary gold fell \$235m (17%) to \$1,139m.

Exports of services

SERVICES CREDITS



(a) A trend break of \$106m has been applied to January 2008.

In trend terms, services credits rose \$52m (1%) to \$4,697m.

In seasonally adjusted terms, services credits rose \$31m (1%) to \$4,731m.

The components contributing to the rise in the seasonally adjusted estimates were:

- other services, up \$16m (1%)
- manufacturing services on physical inputs owned by others, up \$12m (60%)
- transport services, up \$11m (2%).

Partly offsetting these rises was the travel services component, down \$6m.

In seasonally adjusted terms, tourism related services credits fell \$2m to \$3,144m.

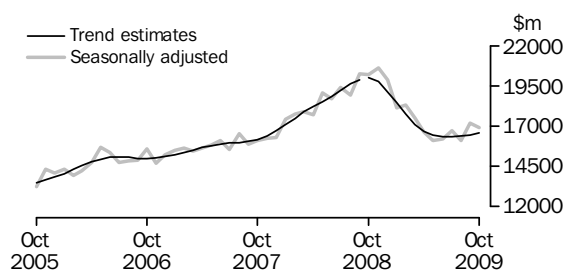
IMPORTS OF GOODS AND SERVICES

Between September 2009 and October 2009 the trend estimate of goods and services debits rose \$172m (1%) to \$21,469m.

In seasonally adjusted terms, goods and services debits fell \$170m (1%) to \$21,847m. Intermediate and other merchandise goods fell \$207m (3%), non-monetary gold fell \$66m (9%), consumption goods fell \$42m (1%) and capital goods rose \$35m (1%). Services debits rose \$111m (2%).

Imports of goods

GOODS DEBITS



(a) A trend break of \$167m has been applied to Capital goods n.e.s. debits and related aggregates in October 2008.

CONSUMPTION GOODS

In trend terms, imports of consumption goods fell \$10m to \$5,066m.

In seasonally adjusted terms, imports of consumption goods fell \$42m (1%) to \$5,044m.

The main component contributing to the fall in the seasonally adjusted estimates was the household electrical items component, down \$58m (12%).

CAPITAL GOODS

In trend terms, imports of capital goods rose \$25m (1%) to \$3,724m.

In seasonally adjusted terms, imports of capital goods rose \$35m (1%) to \$4,029m.

The components contributing to the rise in the seasonally adjusted estimates were:

- capital goods n.e.s., up \$153m (14%)
- ADP equipment, up \$38m (7%).

Partly offsetting these rises were:

- machinery and industrial equipment, down \$83m (6%)
- industrial transport equipment n.e.s., down \$41m (8%)
- telecommunications equipment, down \$32m (6%).

INTERMEDIATE AND OTHER MERCHANDISE GOODS

In trend terms, imports of intermediate and other merchandise goods rose \$34m to \$7,159m.

In seasonally adjusted terms, imports of intermediate and other merchandise goods fell \$207m (3%) to \$7,147m.

The main components contributing to the fall in the seasonally adjusted estimates were:

- fuels and lubricants, down \$236m (10%)
- parts for transport equipment, down \$75m (10%).

Partly offsetting these decreases was the goods procured in ports by carriers component, up \$65m (52%).

In original terms the fall in the fuels and lubricants component was driven by crude petroleum, down \$175m (17%) with volumes down 11% and prices down 7%. Refined petroleum oils was down \$75m (7%) with prices down 7%.

ANALYSIS AND COMMENTS *continued*

Imports of goods continued

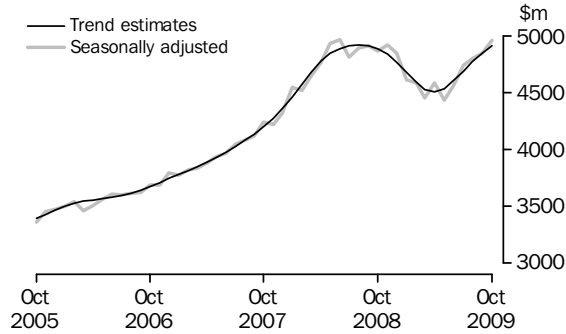
NON-MONETARY GOLD

In trend terms, imports of non-monetary gold rose \$59m (11%) to \$608m.

In both original terms and seasonally adjusted terms, non-monetary gold fell \$66m (9%) to \$671m.

Imports of services

SERVICES DEBITS



In trend terms, services debits rose \$63m (1%) to \$4,911m.

In seasonally adjusted terms, services debits rose \$111m (2%) to \$4,956m.

The main components contributing to the rise in the seasonally adjusted estimates were:

- other services, up \$88m (2%)
- travel services, up \$19m (1%).

Partly offsetting these rises was the maintenance and repair services n.i.e. component, down \$6m (29%).

In seasonally adjusted terms, tourism related services debits rose \$7m to \$2,550m.

GOODS AND SERVICES (a), Summary—Seasonally Adjusted and Trend Estimates

	Nov 2008	Dec 2008	Jan 2009	Feb 2009	Mar 2009	Apr 2009	May 2009	Jun 2009	Jul 2009	Aug 2009	Sep 2009	Oct 2009
	\$m	\$m	\$m	\$m	\$m	\$m	\$m	\$m	\$m	\$m	\$m	\$m
SEASONALLY ADJUSTED												
BALANCE												
On goods and services	646	-247	595	1 276	1 907	-7	-606	-573	-1 716	-1 616	-1 845	-2 379
CREDITS												
Total goods and services	26 162	24 448	23 352	24 186	23 859	21 204	19 928	20 171	19 752	19 303	20 171	19 468
Total goods	21 723	19 952	18 881	19 711	19 391	16 774	15 485	15 720	15 221	14 735	15 472	14 737
Rural goods(b)	2 498	2 530	2 490	2 553	2 735	2 445	2 320	2 298	2 188	2 099	2 015	1 859
Non-rural goods(b)	17 839	16 074	14 920	14 908	14 509	12 979	12 162	12 257	12 173	11 775	12 057	11 732
Net exports of goods under merchandise(c)	-11	-10	38	38	38	25	25	25	25	25	26	8
Non-monetary gold(c)	1 397	1 358	1 433	2 212	2 109	1 325	978	1 140	835	836	1 374	1 139
Total services	4 439	4 496	4 470	4 475	4 467	4 430	4 443	4 451	4 531	4 568	4 700	4 731
DEBITS												
Total goods and services	-25 516	-24 695	-22 757	-22 909	-21 952	-21 211	-20 534	-20 744	-21 468	-20 919	-22 017	-21 847
Total goods	-20 596	-19 854	-18 147	-18 321	-17 499	-16 626	-16 100	-16 184	-16 734	-16 121	-17 171	-16 891
Consumption goods	-5 328	-5 435	-5 144	-4 473	-5 143	-5 070	-4 976	-5 190	-5 238	-4 962	-5 086	-5 044
Capital goods	-4 404	-5 246	-4 391	-4 940	-4 264	-3 794	-3 525	-3 682	-3 821	-3 922	-3 994	-4 029
Intermediate and other merchandise goods	-9 281	-8 402	-7 511	-7 216	-7 029	-7 179	-6 714	-6 966	-7 420	-6 682	-7 354	-7 147
Non-monetary gold(c)	-1 583	-771	-1 101	-1 691	-1 063	-584	-884	-346	-255	-555	-737	-671
Total services	-4 920	-4 841	-4 609	-4 588	-4 453	-4 584	-4 434	-4 560	-4 735	-4 798	-4 845	-4 956
TREND ESTIMATES (d)												
BALANCE												
On goods and services	1 173	1 400	1 385	1 229	923	452	-131	-738	-1 218	-1 557	-1 814	-1 936
CREDITS												
Total goods and services	25 767	25 300	24 508	23 553	22 564	21 635	20 846	20 219	19 810	19 597	19 484	19 532
Total goods	21 330	20 843	20 039	19 086	18 110	17 189	16 391	15 733	15 276	15 007	14 838	14 835
Rural goods(b)	2 501	2 552	2 576	2 572	2 539	2 479	2 395	2 291	2 184	2 087	1 999	1 937
Non-rural goods(b)	17 330	16 679	15 745	14 749	13 875	13 184	12 685	12 316	12 059	11 898	11 790	11 776
Net exports of goods under merchandise	10	10	16	25	31	33	30	26	24	22	20	18
Non-monetary gold	1 489	1 601	1 701	1 740	1 665	1 493	1 281	1 100	1 008	999	1 029	1 104
Total services	4 437	4 457	4 469	4 466	4 455	4 446	4 455	4 487	4 535	4 590	4 645	4 697
DEBITS												
Total goods and services	-24 594	-23 900	-23 122	-22 323	-21 642	-21 184	-20 977	-20 958	-21 029	-21 154	-21 297	-21 469
Total goods	-19 758	-19 132	-18 443	-17 734	-17 116	-16 680	-16 444	-16 356	-16 344	-16 385	-16 449	-16 557
Consumption goods	-5 228	-5 179	-5 093	-5 018	-4 985	-5 000	-5 049	-5 096	-5 111	-5 099	-5 076	-5 066
Capital goods	-4 394	-4 375	-4 269	-4 136	-3 998	-3 871	-3 774	-3 718	-3 697	-3 696	-3 699	-3 724
Intermediate and other merchandise goods	-9 019	-8 389	-7 864	-7 410	-7 095	-6 956	-6 946	-6 993	-7 041	-7 084	-7 125	-7 159
Non-monetary gold	-1 116	-1 189	-1 216	-1 170	-1 038	-854	-675	-548	-496	-507	-549	-608
Total services	-4 837	-4 768	-4 679	-4 589	-4 526	-4 503	-4 533	-4 602	-4 685	-4 769	-4 848	-4 911

(a) For sign conventions, see paragraph 15 of the Explanatory Notes.

(b) For all time periods, estimates for sugar, sugar preparations and honey are included in Non-rural goods.

(c) These components are not seasonally adjusted.

(d) Caution should be used when interpreting recent trend estimates as they may be affected by unusual economic factors. For more details on trend estimates, please see paragraph 19 of the explanatory notes.

GOODS AND SERVICES (a), Summary—Original

	Nov 2008	Dec 2008	Jan 2009	Feb 2009	Mar 2009	Apr 2009	May 2009	Jun 2009	Jul 2009	Aug 2009	Sep 2009	Oct 2009
	\$m	\$m	\$m	\$m	\$m	\$m	\$m	\$m	\$m	\$m	\$m	\$m
BALANCE												
On goods and services	168	74	-510	2 201	2 779	178	469	-783	-2 227	-771	-3 064	-2 953
CREDITS												
Total goods and services	26 255	25 506	21 817	23 088	24 544	20 764	19 987	19 589	19 780	19 753	20 249	20 509
Total goods	21 724	21 026	17 396	18 533	19 921	16 243	15 664	15 515	15 231	15 099	15 732	15 545
Rural goods(b)	2 509	2 619	2 197	2 533	2 986	2 488	2 471	2 221	2 110	2 071	1 987	1 906
Non-rural goods(b)	17 829	17 059	13 728	13 750	14 788	12 405	12 190	12 129	12 261	12 167	12 345	12 492
Net exports of goods under merchanting	-11	-10	38	38	38	25	25	25	25	25	26	8
Non-monetary gold	1 397	1 358	1 433	2 212	2 109	1 325	978	1 140	835	836	1 374	1 139
Total services	4 531	4 480	4 421	4 555	4 623	4 521	4 323	4 074	4 549	4 654	4 517	4 964
DEBITS												
Total goods and services	-26 087	-25 432	-22 327	-20 887	-21 765	-20 586	-19 518	-20 372	-22 007	-20 524	-23 313	-23 462
Total goods	-21 346	-20 325	-17 482	-16 902	-17 555	-16 092	-15 311	-15 832	-17 000	-15 785	-18 048	-18 227
Consumption goods	-5 793	-5 528	-4 846	-4 039	-4 944	-4 730	-4 542	-4 927	-5 411	-4 922	-5 570	-5 786
Capital goods	-4 744	-5 515	-4 044	-4 353	-4 370	-3 618	-3 449	-3 761	-3 853	-3 739	-4 181	-4 261
Intermediate and other merchandise goods	-9 226	-8 511	-7 491	-6 819	-7 178	-7 160	-6 436	-6 798	-7 481	-6 569	-7 560	-7 509
Non-monetary gold	-1 583	-771	-1 101	-1 691	-1 063	-584	-884	-346	-255	-555	-737	-671
Total services	-4 741	-5 107	-4 845	-3 985	-4 210	-4 494	-4 207	-4 540	-5 007	-4 739	-5 265	-5 235

(a) For sign conventions, see paragraph 15 of the Explanatory Notes.

(b) For all time periods, estimates for sugar, sugar preparations and honey are included in Non-rural goods.

							4 MONTHS ENDED OCTOBER		Change %
	2006-07	2007-08	2008-09	Aug 2009	Sep 2009	Oct 2009	2008	2009	
	\$m	\$m	\$m	\$m	\$m	\$m	\$m	\$m	
Total goods credits	169 524	182 952	231 406	15 099	15 732	15 545	85 384	61 607	-27.8
General merchandise	158 570	170 471	213 589	14 238	14 332	14 398	79 687	57 339	-28.0
<i>Rural goods</i>	25 090	25 494	29 361	2 071	1 987	1 906	9 337	8 074	-13.5
Meat and meat preparations	7 080	6 542	7 454	547	523	554	2 587	2 152	-16.8
Cereal grains and cereal preparations	4 171	4 975	6 881	503	401	310	1 797	1 685	-6.2
Wool and sheepskins	3 065	2 796	2 322	94	151	219	808	603	-25.4
Other rural (a)	10 774	11 181	12 704	927	912	823	4 145	3 634	-12.3
<i>Non-rural goods</i>	133 480	144 977	184 228	12 167	12 345	12 492	70 350	49 265	-30.0
Metal ores and minerals	35 315	41 339	51 887	3 737	3 664	3 588	19 938	14 495	-27.3
Coal, coke and briquettes	21 928	24 599	54 916	2 754	2 904	2 650	20 718	11 342	-45.3
Other mineral fuels	15 641	18 889	20 711	1 430	1 276	1 649	8 326	5 853	-29.7
Metals (excl. non-monetary gold)	14 821	14 039	12 389	909	801	928	5 081	3 428	-32.5
Machinery	8 391	8 750	8 900	647	721	702	3 186	2 768	-13.1
Transport equipment	4 651	5 723	5 093	356	342	387	2 390	1 402	-41.3
Other manufactures	16 241	16 965	17 601	1 425	1 445	1 424	6 247	5 751	-7.9
Other non-rural (incl. sugar and beverages)	15 113	13 126	11 100	806	1 071	1 062	3 798	3 795	-0.1
Goods procured in ports by carriers	1 379	1 547	1 631	103	121	102	666	431	-35.3
Net exports of goods under merchanting	214	209	310	25	26	8	142	84	-40.8
Goods acquired under merchanting									
(negative exports)	-1 303	-1 528	-2 394	-159	-158	-176	-810	-652	19.5
Goods sold under merchanting	1 517	1 737	2 704	184	184	184	952	736	-22.7
Non-monetary gold	10 740	12 272	17 507	836	1 374	1 139	5 555	4 184	-24.7

(a) For all time periods, estimates for sugar, sugar preparations and honey are included in Other non-rural.

GOODS DEBITS(a), Original

							4 MONTHS ENDED OCTOBER		Change
	2006-07	2007-08	2008-09	Aug 2009	Sep 2009	Oct 2009	2008	2009	
	\$m	\$m	\$m	\$m	\$m	\$m	\$m	\$m	
Total goods debits	-183 572	-204 846	-222 520	-15 785	-18 048	-18 227	-81 675	-69 060	15.4
General merchandise	-178 261	-197 253	-210 998	-15 230	-17 311	-17 556	-78 176	-66 842	14.5
<i>Consumption goods</i>	-54 913	-59 371	-61 419	-4 922	-5 570	-5 786	-22 070	-21 689	1.7
Food and beverages, mainly for consumption	-7 182	-7 840	-8 857	-727	-805	-828	-2 996	-3 134	-4.6
Household electrical items	-4 525	-5 051	-5 488	-496	-552	-542	-1 963	-2 112	-7.6
Non-industrial transport equipment	-14 894	-16 872	-13 247	-1 015	-1 290	-1 397	-5 416	-4 856	10.3
Textiles, clothing and footwear	-6 805	-7 051	-8 287	-646	-659	-623	-2 769	-2 661	3.9
Toys, books and leisure goods	-4 328	-4 561	-5 277	-449	-492	-553	-1 988	-1 908	4.0
Consumption goods n.e.s.	-17 179	-17 996	-20 263	-1 589	-1 772	-1 843	-6 938	-7 018	-1.2
<i>Capital goods</i>	-41 774	-45 299	-51 460	-3 739	-4 181	-4 261	-17 606	-16 034	8.9
Machinery and industrial equipment	-15 330	-16 480	-18 490	-1 277	-1 323	-1 253	-6 444	-5 205	19.2
ADP equipment	-7 008	-7 074	-7 257	-562	-534	-605	-2 483	-2 387	3.9
Telecommunications equipment	-5 315	-5 790	-6 432	-452	-580	-558	-2 180	-2 072	5.0
Civil aircraft(b)	-1 667	-2 691	na	na	na	na	na	na	na
Industrial transport equipment n.e.s.	-6 463	-7 502	-6 527	-381	-585	-501	-3 022	-1 928	36.2
Capital goods n.e.s.(b)	-5 991	-5 762	-11 230	-1 067	-1 159	-1 344	-2 218	-4 442	-100.3
<i>Intermediate and other merchandise goods</i>	-81 574	-92 583	-98 119	-6 569	-7 560	-7 509	-38 500	-29 119	24.4
Food and beverages, mainly for industry	-819	-923	-1 186	-91	-85	-82	-400	-365	8.8
Primary industrial supplies n.e.s.	-1 552	-1 477	-1 899	-128	-106	-97	-755	-404	46.5
Fuels and lubricants	-21 470	-29 772	-28 210	-1 810	-2 258	-2 022	-12 775	-8 508	33.4
Parts for transport equipment	-8 355	-8 837	-8 599	-616	-801	-753	-3 402	-2 767	18.7
Parts for ADP equipment	-1 620	-1 115	-1 067	-68	-61	-73	-348	-302	13.2
Other parts for capital goods	-11 780	-11 990	-14 311	-1 062	-1 219	-1 242	-4 604	-4 713	-2.4
Organic and inorganic chemicals	-4 406	-4 673	-5 385	-354	-324	-378	-1 939	-1 406	27.5
Paper and paperboard	-2 368	-2 359	-2 402	-179	-213	-217	-960	-792	17.5
Textile yarn and fabrics	-1 366	-1 334	-1 344	-110	-112	-108	-490	-432	11.8
Iron and steel	-3 817	-3 721	-5 528	-264	-254	-229	-2 222	-1 041	53.2
Plastics	-2 957	-3 064	-3 028	-208	-228	-247	-1 162	-914	21.3
Processed industrial supplies n.e.s.	-17 997	-20 132	-21 919	-1 492	-1 661	-1 731	-7 955	-6 520	18.0
Other merchandise goods(b)	-1 619	-1 415	-1 516	-62	-114	-141	-732	-392	46.4
Goods procured in ports by carriers	-1 448	-1 771	-1 725	-125	-124	-189	-756	-563	25.5
Non-monetary gold	-5 311	-7 593	-11 522	-555	-737	-671	-3 499	-2 218	36.6

na not available

(a) For sign conventions, see paragraph 15 of the Explanatory Notes.

(b) From December 2008, the Civil aircraft series and commodities subject to a 'no commodity details' or 'no value details' restriction are included in Capital goods n.e.s.. From September to November 2008 commodities with these restriction are included in Civil aircraft and for earlier periods are included in Other merchandise goods.

GOODS CREDITS, Seasonally Adjusted

	Jan 2009	Feb 2009	Mar 2009	Apr 2009	May 2009	Jun 2009	Jul 2009	Aug 2009	Sep 2009	Oct 2009
	\$m	\$m	\$m	\$m	\$m	\$m	\$m	\$m	\$m	\$m
Total goods credits	18 881	19 711	19 391	16 774	15 485	15 720	15 221	14 735	15 472	14 737
General merchandise	17 410	17 461	17 244	15 424	14 482	14 555	14 361	13 874	14 072	13 590
<i>Rural goods</i>	2 490	2 553	2 735	2 445	2 320	2 298	2 188	2 099	2 015	1 859
Meat and meat preparations	592	652	630	584	586	558	551	551	511	506
Cereal grains and cereal preparations	584	592	784	618	563	614	511	489	435	376
Wool and sheepskins	179	194	181	174	169	163	160	160	160	173
Other rural (a)	1 135	1 116	1 140	1 070	1 002	964	966	898	909	803
<i>Non-rural goods</i>	14 920	14 908	14 509	12 979	12 162	12 257	12 173	11 775	12 057	11 732
Metal ores and minerals	4 298	4 379	4 316	3 892	3 707	3 591	3 644	3 618	3 646	3 379
Coal, coke and briquettes(b)	4 445	4 348	4 104	3 630	3 031	3 094	2 979	2 704	2 946	2 602
Other mineral fuels(c)	1 701	1 652	1 513	1 327	1 285	1 376	1 363	1 319	1 209	1 426
Metals (excl. non-monetary gold)(c)	890	892	830	849	834	855	815	835	856	888
Machinery	690	770	757	674	659	690	669	641	672	654
Transport equipment	417	359	358	273	216	269	302	354	324	317
Other manufactures	1 439	1 481	1 489	1 378	1 392	1 402	1 390	1 374	1 350	1 362
Other non-rural (incl. sugar and beverages)	907	893	1 022	848	939	880	905	829	944	1 003
Goods procured in ports by carriers(c)	133	134	119	109	99	99	106	101	109	100
Net exports of goods under merchanting(d)	38	38	38	25	25	25	25	25	26	8
Non-monetary gold(d)	1 433	2 212	2 109	1 325	978	1 140	835	836	1 374	1 139

(a) For all time periods, estimates for sugar, sugar preparations and honey are included in Other non-rural.

(b) Only a length-of-month adjustment has been applied to this component.

(c) In using these seasonally adjusted series, care should be exercised because of the difficulties associated with reliably estimating the seasonal pattern.

(d) This component is not seasonally adjusted.

GOODS DEBITS(a), Seasonally Adjusted

	Jan 2009	Feb 2009	Mar 2009	Apr 2009	May 2009	Jun 2009	Jul 2009	Aug 2009	Sep 2009	Oct 2009
	\$m	\$m	\$m	\$m	\$m	\$m	\$m	\$m	\$m	\$m
Total goods debits	-18 147	-18 321	-17 499	-16 626	-16 100	-16 184	-16 734	-16 121	-17 171	-16 891
General merchandise	-17 046	-16 630	-16 436	-16 042	-15 216	-15 838	-16 479	-15 566	-16 434	-16 220
Consumption goods	-5 144	-4 473	-5 143	-5 070	-4 976	-5 190	-5 238	-4 962	-5 086	-5 044
Food and beverages, mainly for consumption	-753	-684	-797	-727	-731	-758	-782	-761	-748	-752
Household electrical items	-465	-390	-419	-493	-523	-536	-514	-503	-475	-417
Non-industrial transport equipment	-1 002	-793	-889	-914	-866	-1 096	-1 115	-1 046	-1 208	-1 244
Textiles, clothing and footwear	-746	-636	-783	-715	-665	-661	-670	-629	-624	-598
Toys, books and leisure goods	-442	-377	-467	-459	-459	-441	-434	-425	-391	-409
Consumption goods n.e.s.	-1 736	-1 593	-1 788	-1 762	-1 732	-1 698	-1 721	-1 597	-1 641	-1 623
Capital goods	-4 391	-4 940	-4 264	-3 794	-3 525	-3 682	-3 821	-3 922	-3 994	-4 029
Machinery and industrial equipment	-1 554	-1 504	-1 762	-1 440	-1 229	-1 364	-1 336	-1 283	-1 293	-1 210
ADP equipment	-590	-588	-586	-588	-514	-569	-659	-602	-552	-590
Telecommunications equipment	-558	-584	-592	-528	-520	-514	-513	-504	-530	-498
Civil aircraft(b)(c)	na	na	na	na	na	na	na	na	na	na
Industrial transport equipment n.e.s.	-500	-456	-428	-338	-292	-355	-422	-408	-522	-481
Capital goods n.e.s.(b)	-1 189	-1 808	-897	-900	-972	-879	-891	-1 126	-1 097	-1 250
Intermediate and other merchandise goods	-7 511	-7 216	-7 029	-7 179	-6 714	-6 966	-7 420	-6 682	-7 354	-7 147
Food and beverages, mainly for industry	-107	-97	-99	-97	-87	-89	-94	-95	-79	-81
Primary industrial supplies n.e.s.(d)	-194	-99	-127	-99	-99	-124	-81	-117	-104	-80
Fuels and lubricants(c)	-1 823	-1 872	-1 709	-1 796	-1 761	-2 014	-2 418	-1 810	-2 258	-2 022
Parts for transport equipment	-667	-611	-650	-645	-596	-602	-587	-621	-769	-694
Parts for ADP equipment	-90	-87	-90	-86	-75	-79	-94	-74	-60	-76
Other parts for capital goods	-1 258	-1 156	-1 229	-1 241	-1 181	-1 180	-1 162	-1 120	-1 161	-1 185
Organic and inorganic chemicals	-441	-413	-358	-400	-362	-391	-358	-355	-336	-361
Paper and paperboard	-207	-191	-189	-177	-168	-167	-171	-174	-185	-183
Textile yarn and fabrics	-114	-104	-113	-107	-99	-93	-102	-106	-103	-103
Iron and steel	-461	-445	-333	-348	-282	-271	-283	-263	-249	-207
Plastics	-232	-233	-248	-225	-200	-211	-234	-216	-212	-222
Processed industrial supplies n.e.s.	-1 730	-1 712	-1 705	-1 625	-1 603	-1 558	-1 633	-1 544	-1 600	-1 603
Other merchandise goods(b)(e)	-83	-90	-73	-220	-87	-73	-75	-62	-114	-141
Goods procured in ports by carriers(c)	-105	-105	-105	-113	-113	-115	-125	-125	-124	-189
Non-monetary gold(c)	-1 101	-1 691	-1 063	-584	-884	-346	-255	-555	-737	-671

na not available

(a) For sign conventions, see paragraph 15 of the Explanatory Notes.

(b) From December 2008, the Civil aircraft series and commodities subject to a 'no commodity details' or 'no value details' restriction are included in Capital goods n.e.s.. From September to November 2008 commodities with these restrictions are included in Civil aircraft and for earlier periods are included in Other merchandise goods.

(c) These components are not seasonally adjusted.

(d) In using these seasonally adjusted series, care should be exercised because of the difficulties associated with reliably estimating the seasonal pattern.

(e) From July 1981, this component is not seasonally adjusted.

GOODS CREDITS(a), Trend Estimates

	Jan 2009	Feb 2009	Mar 2009	Apr 2009	May 2009	Jun 2009	Jul 2009	Aug 2009	Sep 2009	Oct 2009
	\$m	\$m	\$m	\$m	\$m	\$m	\$m	\$m	\$m	\$m
Total goods credits	20 039	19 086	18 110	17 189	16 391	15 733	15 276	15 007	14 838	14 835
General merchandise	18 321	17 321	16 413	15 663	15 080	14 606	14 244	13 986	13 789	13 713
<i>Rural goods</i>	2 576	2 572	2 539	2 479	2 395	2 291	2 184	2 087	1 999	1 937
Meat and meat preparations	641	624	609	597	584	567	550	536	523	513
Cereal grains and cereal preparations	610	641	653	643	615	573	526	480	438	410
Wool and sheepskins	190	183	178	174	169	165	163	162	163	164
Other rural(b)	1 135	1 123	1 098	1 066	1 027	986	946	909	875	849
<i>Non-rural goods</i>	15 745	14 749	13 875	13 184	12 685	12 316	12 059	11 898	11 790	11 776
Metal ores and minerals	4 267	4 155	4 061	3 962	3 840	3 712	3 624	3 567	3 521	3 500
Coal, coke and briquettes	5 011	4 448	3 942	3 552	3 290	3 098	2 942	2 822	2 730	2 680
Other mineral fuels	1 775	1 633	1 503	1 406	1 351	1 327	1 318	1 317	1 320	1 332
Metals (excl. non-monetary gold)	949	884	846	831	831	835	839	845	854	861
Machinery	760	738	717	699	685	674	665	659	656	657
Transport equipment	421	368	320	288	276	279	293	308	322	336
Other manufactures	1 491	1 465	1 441	1 421	1 406	1 392	1 381	1 371	1 364	1 361
Other non-rural (incl. sugar and beverages)	933	931	927	915	902	895	896	905	920	945
Goods procured in ports by carriers	137	127	117	110	105	103	102	102	103	103
Net exports of goods under merchanting	16	25	31	33	30	26	24	22	20	18
Non-monetary gold	1 701	1 740	1 665	1 493	1 281	1 100	1 008	999	1 029	1 104

(a) Caution should be used when interpreting recent trend estimates as they may be affected by unusual economic factors. For more details on trend estimates, please see paragraph 19 of the explanatory notes.

(b) For all time periods, estimates for sugar, sugar preparations and honey are included in Other non-rural.

	Jan 2009	Feb 2009	Mar 2009	Apr 2009	May 2009	Jun 2009	Jul 2009	Aug 2009	Sep 2009	Oct 2009
	\$m	\$m	\$m	\$m	\$m	\$m	\$m	\$m	\$m	\$m
Total goods debits	-18 443	-17 734	-17 116	-16 680	-16 444	-16 356	-16 344	-16 385	-16 449	-16 557
General merchandise	-17 226	-16 564	-16 078	-15 827	-15 769	-15 807	-15 848	-15 878	-15 900	-15 949
<i>Consumption goods</i>	-5 093	-5 018	-4 985	-5 000	-5 049	-5 096	-5 111	-5 099	-5 076	-5 066
Food and beverages, mainly for consumption	-750	-744	-742	-744	-749	-755	-758	-759	-758	-760
Household electrical items	-441	-444	-456	-477	-499	-511	-510	-497	-480	-459
Non-industrial transport equipment	-994	-931	-898	-900	-941	-1 007	-1 072	-1 128	-1 176	-1 218
Textiles, clothing and footwear	-736	-729	-717	-703	-688	-672	-654	-636	-619	-610
Toys, books and leisure goods	-443	-442	-443	-446	-447	-443	-433	-422	-410	-402
Consumption goods n.e.s.	-1 729	-1 729	-1 730	-1 730	-1 724	-1 708	-1 684	-1 657	-1 633	-1 617
<i>Capital goods</i>	-4 269	-4 136	-3 998	-3 871	-3 774	-3 718	-3 697	-3 696	-3 699	-3 724
Machinery and industrial equipment	-1 619	-1 582	-1 526	-1 462	-1 400	-1 348	-1 308	-1 279	-1 255	-1 252
ADP equipment	-626	-597	-577	-569	-574	-582	-588	-591	-592	-592
Telecommunications equipment	-554	-556	-553	-546	-535	-522	-513	-510	-508	-509
Civil aircraft(c)	na	na	na	na	na	na	na	na	na	na
Industrial transport equipment n.e.s.	-508	-451	-399	-362	-351	-366	-395	-429	-461	-493
Capital goods n.e.s.(c)	np	np	np	np	np	np	np	np	np	np
<i>Intermediate and other merchandise goods</i>	-7 864	-7 410	-7 095	-6 956	-6 946	-6 993	-7 041	-7 084	-7 125	-7 159
Food and beverages, mainly for industry	-107	-102	-97	-94	-93	-91	-90	-88	-86	-84
Primary industrial supplies n.e.s.	-165	-144	-123	-109	-103	-103	-103	-101	-97	-95
Fuels and lubricants	-1 971	-1 805	-1 744	-1 792	-1 889	-1 980	-2 050	-2 098	-2 127	-2 137
Parts for transport equipment	-659	-649	-633	-617	-609	-614	-630	-651	-675	-699
Parts for ADP equipment	-90	-89	-87	-85	-83	-81	-78	-76	-73	-71
Other parts for capital goods	-1 251	-1 237	-1 220	-1 202	-1 188	-1 177	-1 166	-1 158	-1 153	-1 153
Organic and inorganic chemicals	-464	-427	-397	-379	-371	-368	-363	-358	-353	-347
Paper and paperboard	-203	-194	-185	-177	-173	-171	-173	-175	-178	-181
Textile yarn and fabrics	-117	-112	-107	-104	-101	-101	-101	-101	-102	-103
Iron and steel	-510	-443	-379	-330	-300	-282	-268	-254	-241	-228
Plastics	-251	-239	-229	-222	-219	-218	-217	-217	-217	-219
Processed industrial supplies n.e.s.	-1 864	-1 764	-1 680	-1 625	-1 601	-1 594	-1 587	-1 584	-1 583	-1 588
Other merchandise goods(c)	-90	-94	-106	-112	-106	-97	-91	-91	-96	-99
Goods procured in ports by carriers	-122	-112	-108	-107	-110	-116	-124	-133	-143	-153
Non-monetary gold	-1 216	-1 170	-1 038	-854	-675	-548	-496	-507	-549	-608

na not available

np not available for publication but included in totals where applicable, unless otherwise indicated

(a) For sign conventions, see paragraph 15 of the Explanatory Notes.

(b) Caution should be used when interpreting recent trend estimates as they may be affected by unusual economic factors. For more details on trend estimates, please see paragraph 19 of the explanatory notes.

(c) From December 2008, the Civil aircraft series and commodities subject to a 'no commodity details' or 'no value details' restriction are included in Capital goods n.e.s.. From September to November 2008 commodities with these restrictions are included in Civil aircraft and for earlier periods are included in Other merchandise goods. Trend estimates for the Capital goods n.e.s. series from December 2008 have been suppressed due to the change in the composition of the series.

							4 MONTHS ENDED OCTOBER		Change %
	2006-07	2007-08	2008-09	Aug 2009	Sep 2009	Oct 2009	2008	2009	
	\$m	\$m	\$m	\$m	\$m	\$m	\$m	\$m	
Services credits	45 956	50 645	53 287	4 654	4 517	4 964	17 759	18 684	5.2
Manufacturing services on physical inputs owned by others	121	77	258	24	20	32	59	104	76.3
Maintenance and repair services n.i.e.	90	103	86	9	7	5	32	26	-18.8
Transport	8 546	9 129	7 901	593	565	578	2 917	2 333	-20.0
Passenger(c)	4 237	4 118	3 653	247	220	255	1 248	973	-22.0
Freight	765	1 463	848	40	41	40	403	161	-60.0
Other	2 348	2 595	2 446	204	203	206	884	817	-7.6
Postal and courier services(d)	1 196	953	954	102	101	77	382	382	—
Travel	25 161	28 252	30 981	2 873	2 759	3 054	9 998	11 451	14.5
Other services	12 038	13 084	14 061	1 155	1 166	1 295	4 753	4 770	0.4
Services debits	-45 139	-53 330	-56 499	-4 739	-5 265	-5 235	-20 370	-20 246	0.6
Manufacturing services on physical inputs owned by others	-3	-7	-4	-1	—	-1	-4	-2	50.0
Maintenance and repair services n.i.e.	-131	-97	-197	-18	-21	-15	-49	-71	-44.9
Transport	-15 732	-16 797	-16 180	-1 099	-1 294	-1 257	-6 306	-4 806	23.8
Passenger(c)	-6 876	-7 278	-6 094	-468	-560	-456	-2 458	-1 972	19.8
Freight	-8 303	-8 923	-9 386	-554	-658	-750	-3 609	-2 553	29.3
Other	-385	-417	-527	-41	-41	-43	-163	-166	-1.8
Postal and courier services(d)	-168	-179	-173	-36	-35	-8	-76	-115	-51.3
Travel	-15 934	-20 153	-22 133	-2 053	-2 379	-2 222	-8 032	-8 919	-11.0
Other services	-13 339	-16 276	-17 985	-1 568	-1 571	-1 740	-5 979	-6 448	-7.8
Memorandum items:									
Tourism related service credits(e)	29 398	32 370	34 634	3 120	2 979	3 309	11 246	12 424	10.5
Tourism related service debits(e)	-22 810	-27 431	-28 227	-2 521	-2 939	-2 678	-10 490	-10 891	-3.8

— nil or rounded to zero (including null cells)

(a) For sign conventions, see paragraph 15 of the Explanatory Notes.

(b) For more detailed trade in services components, see table 11.

(c) Passenger services includes agency fees and commissions for air transport.

(d) Postal and courier services includes indirect commissions for sea transport.

(e) For a more detailed explanation of tourism related services, see paragraph 27 of the Explanatory Notes.

	Jan 2009	Feb 2009	Mar 2009	Apr 2009	May 2009	Jun 2009	Jul 2009	Aug 2009	Sep 2009	Oct 2009
	\$m	\$m	\$m	\$m	\$m	\$m	\$m	\$m	\$m	\$m
SEASONALLY ADJUSTED										
Services credits	4 470	4 475	4 467	4 430	4 443	4 451	4 531	4 568	4 700	4 731
Manufacturing services on physical inputs owned by others(b)	24	33	27	31	28	27	28	24	20	32
Maintenance and repair services n.i.e.(b)	7	7	8	4	5	3	5	9	7	5
Transport	662	634	616	581	553	562	576	577	573	584
Passenger(c)	332	306	292	271	245	254	251	256	250	255
Freight(d)	54	53	52	50	50	47	42	39	39	39
Other(d)	195	196	197	189	189	191	197	198	198	203
Postal and courier services(e)	81	78	74	71	70	70	86	83	85	87
Travel	2 619	2 633	2 642	2 710	2 741	2 728	2 737	2 770	2 895	2 889
Other services	1 157	1 169	1 175	1 104	1 115	1 131	1 186	1 189	1 205	1 221
Services debits	-4 609	-4 588	-4 453	-4 584	-4 434	-4 560	-4 735	-4 798	-4 845	-4 956
Manufacturing services on physical inputs owned by others(b)	—	—	—	—	—	—	—	-1	—	-1
Maintenance and repair services n.i.e.(b)	-23	-11	-25	-27	-14	-19	-17	-18	-21	-15
Transport	-1 312	-1 233	-1 211	-1 199	-1 041	-1 113	-1 128	-1 122	-1 145	-1 153
Passenger(c)	-487	-486	-465	-484	-364	-441	-454	-473	-468	-455
Freight	-767	-690	-691	-657	-617	-613	-612	-587	-616	-641
Other(b)	-45	-45	-44	-43	-43	-41	-41	-41	-41	-43
Postal and courier services(e)	-13	-12	-12	-15	-17	-18	-21	-22	-20	-14
Travel	-1 793	-1 846	-1 706	-1 890	-1 890	-1 921	-2 007	-2 063	-2 076	-2 095
Other services	-1 481	-1 498	-1 511	-1 468	-1 490	-1 507	-1 583	-1 594	-1 603	-1 691
Memorandum items:										
Tourism related service credits(f)	2 951	2 938	2 934	2 981	2 986	2 982	2 988	3 025	3 146	3 144
Tourism related service debits(f)	-2 280	-2 332	-2 171	-2 374	-2 254	-2 362	-2 461	-2 535	-2 543	-2 550

TREND ESTIMATES

Services credits	4 469	4 466	4 455	4 446	4 455	4 487	4 535	4 590	4 645	4 697
Manufacturing services on physical inputs owned by others	24	27	28	29	29	27	26	26	26	26
Maintenance and repair services n.i.e.	8	7	6	5	5	5	6	6	6	7
Transport	653	632	609	588	574	568	568	571	574	579
Passenger(c)	313	304	290	274	261	254	252	251	251	252
Freight	58	54	52	50	48	46	43	41	39	38
Other	202	197	193	191	191	193	195	197	199	201
Postal and courier services(e)	80	77	74	73	73	76	79	82	85	87
Travel	2 604	2 639	2 667	2 689	2 713	2 739	2 770	2 804	2 838	2 867
Other services	1 180	1 161	1 144	1 134	1 135	1 147	1 164	1 183	1 201	1 219
Services debits	-4 679	-4 589	-4 526	-4 503	-4 533	-4 602	-4 685	-4 769	-4 848	-4 911
Manufacturing services on physical inputs owned by others	—	—	—	—	—	—	—	—	-1	-1
Maintenance and repair services n.i.e.	-18	-20	-20	-20	-20	-19	-18	-18	-17	-17
Transport	-1 353	-1 274	-1 203	-1 150	-1 122	-1 114	-1 116	-1 122	-1 131	-1 142
Passenger(c)	-498	-477	-458	-444	-438	-439	-445	-453	-460	-466
Freight	-793	-738	-687	-648	-625	-615	-610	-609	-610	-615
Other	-48	-46	-44	-43	-42	-42	-41	-41	-41	-42
Postal and courier services(e)	-14	-14	-14	-15	-17	-18	-19	-20	-19	-19
Travel	-1 810	-1 804	-1 814	-1 843	-1 888	-1 941	-1 992	-2 037	-2 076	-2 099
Other services	-1 497	-1 491	-1 488	-1 491	-1 504	-1 528	-1 558	-1 591	-1 623	-1 654
Memorandum items:										
Tourism related service credits(f)	2 917	2 943	2 956	2 963	2 974	2 994	3 022	3 055	3 089	3 119
Tourism related service debits(f)	-2 308	-2 281	-2 272	-2 287	-2 326	-2 380	-2 437	-2 490	-2 536	-2 565

— nil or rounded to zero (including null cells)

(a) For sign conventions, see paragraph 15 of the Explanatory Notes.

(b) This component is not seasonally adjusted.

(c) Passenger services includes agency fees and commissions for air transport.

(d) In using these seasonally adjusted series, care should be exercised because of the difficulties associated with reliably estimating the seasonal pattern.

(e) Postal and courier services includes indirect commissions for sea transport.

(f) For a more detailed explanation of tourism related services, see paragraph 27 of the Explanatory Notes.

	CREDITS				DEBITS			
	Dec Qtr	Mar Qtr	Jun Qtr	Sep Qtr	Dec Qtr	Mar Qtr	Jun Qtr	Sep Qtr
	2008	2009	2009	2009	2008	2009	2009	2009
	\$m	\$m	\$m	\$m	\$m	\$m	\$m	\$m
Services	13 615	13 599	12 918	13 720	-15 070	-13 040	-13 241	-15 011
Manufacturing services on physical inputs owned by others	57	84	86	72	-3	—	—	-1
Maintenance and repair services n.i.e.	25	22	12	21	-45	-59	-60	-56
Transport	2 080	1 995	1 572	1 755	-4 806	-3 570	-3 176	-3 549
Passenger(b)	987	1 060	657	718	-1 611	-1 322	-1 274	-1 516
Freight	214	154	148	121	-3 001	-2 087	-1 732	-1 803
Other	648	563	567	611	-154	-134	-127	-123
Postal and courier services(c)	231	218	200	305	-40	-27	-43	-107
Travel	7 627	8 125	7 863	8 397	-5 578	-5 019	-5 492	-6 697
Business	640	711	643	683	-751	-728	-624	-671
Personal	6 987	7 414	7 220	7 714	-4 827	-4 291	-4 868	-6 026
Education-related	3 746	4 206	4 463	5 007	-175	-177	-168	-272
Other(d)	3 241	3 208	2 757	2 707	-4 652	-4 114	-4 700	-5 754
Construction	26	21	12	11	—	—	—	—
Insurance and pension services	112	78	64	73	-149	-145	-139	-122
Financial services	310	343	287	291	-224	-173	-180	-176
Charges for the use of intellectual property n.i.e.	170	200	270	286	-854	-897	-909	-968
Telecommunications, computer and information services	552	507	550	592	-591	-584	-559	-595
Telecommunication services	85	76	63	85	-172	-180	-139	-168
Computer and information services	467	431	487	507	-419	-404	-420	-427
Computer services	396	356	399	420	-359	-336	-358	-364
Information services	8	9	12	11	-15	-11	-10	-10
Other services	63	66	76	76	-45	-57	-52	-53
Other business services	2 252	1 804	1 796	1 810	-2 328	-2 028	-2 164	-2 192
Research and development services	164	131	143	161	-87	-60	-59	-69
Professional and management consulting services	1 132	870	865	885	-782	-896	-985	-957
Legal, accounting, management consulting, public relations and other professional services	1 020	775	773	794	-740	-844	-938	-932
Advertising, market research and public opinion polling	112	95	92	91	-42	-52	-47	-25
Technical, trade-related and other business services	956	803	788	764	-1 459	-1 072	-1 120	-1 166
Architectural, engineering and other technical services	468	386	339	322	-568	-414	-431	-446
Waste treatment and de-pollution, agricultural and mining services	77	65	59	62	-307	-183	-210	-168
Operational leasing services	77	74	63	84	-218	-198	-165	-174
Trade-related commission services	213	178	221	179	-57	-44	-57	-70
Other business services n.i.e.	121	100	106	117	-309	-233	-257	-308
Personal, cultural and recreational services	203	204	189	202	-279	-362	-322	-433
Audiovisual and related services	45	53	24	28	-255	-290	-300	-408
Other personal, cultural and recreational services	158	151	165	174	-24	-72	-22	-25
Government goods and services n.i.e.	201	216	217	210	-213	-203	-240	-222
Memorandum items:								
Gross insurance premiums receivable / payable	236	198	168	180	-258	-262	-245	-249
Gross insurance claims payable / receivable	-157	-133	-125	-120	256	287	275	278
Tourism related services(e)	8 614	9 185	8 520	9 115	-7 189	-6 341	-6 766	-8 213

— nil or rounded to zero (including null cells)

(a) For sign conventions, see paragraph 15 of the Explanatory Notes.

(b) Passenger services includes agency fees and commissions for air transport.

(c) Postal and courier services includes indirect commissions for sea transport.

(d) Other personal travel includes health-related travel.

(e) For a more detailed explanation of tourism related services, see paragraph 27 of the Explanatory Notes.

	Aug 2009	Sep 2009	Oct 2009	Per cent of total merchandise exports(b)	4 MONTHS ENDED OCTOBER	
					2008	2009
					\$m	\$m
MAJOR COMMODITIES (c)						
011 Meat of bovine animals	378	328	348	2.2	1 847	1 415
041 Wheat and meslin	377	290	215	1.4	1 163	1 208
268 Wool and other animal hair	77	130	194	1.2	697	522
281 Iron ore and concentrates	2 447	2 371	2 181	14.0	13 222	9 347
283 Copper ores and concentrates	302	368	305	2.0	1 257	1 225
285 Aluminium ores and concentrates	382	365	392	2.5	2 312	1 505
321 Coal, not agglomerated	2 804	2 970	2 646	17.0	20 640	11 501
333 Crude petroleum oils	644	560	839	5.4	3 973	2 697
334 Refined petroleum oils	160	232	191	1.2	1 062	775
343 Natural gas	624	470	608	3.9	3 340	2 328
682 Copper	195	269	214	1.4	1 093	902
684 Aluminium	350	267	338	2.2	2 135	1 260
781 Motor vehicles for transport of people	123	131	187	1.2	1 315	572
971 Gold, non-monetary	817	1 296	1 106	7.1	5 390	4 040

SECTION AND DIVISION OF THE SITC

0	Food and live animals					
00	Live animals (excl. fish, crustaceans, molluscs and aquatic invertebrates)	86	109	94	0.6	395 395
01	Meat and meat preparations	547	514	554	3.6	2 588 2 144
02	Dairy products and birds' eggs	150	142	158	1.0	887 622
03	Fish (not marine mammals), crustaceans, molluscs and aquatic invertebrates, and preparations thereof	97	75	49	0.3	371 292
04	Cereals and cereal preparations	503	393	310	2.0	1 796 1 677
05	Vegetables and fruit	153	108	92	0.6	446 507
06	Sugars, sugar preparations and honey	29	20	32	0.2	88 109
07	Coffee, tea, cocoa, spices, and manufactures thereof	28	27	25	0.2	96 105
08	Feeding stuff for animals (excl. unmilled cereals)	93	86	85	0.5	421 359
09	Miscellaneous edible products and preparations	52	51	56	0.4	219 214
	<i>Total Food and live animals</i>	<i>1 738</i>	<i>1 527</i>	<i>1 454</i>	<i>9.3</i>	<i>7 306 6 424</i>
1	Beverages and tobacco					
11	Beverages	212	240	213	1.4	992 867
12	Tobacco and tobacco manufactures	11	10	11	0.1	40 45
	<i>Total Beverages and tobacco</i>	<i>223</i>	<i>250</i>	<i>224</i>	<i>1.4</i>	<i>1 031 912</i>
2	Crude materials, inedible, except fuels					
21	Hides, skins and furskins, raw	39	44	46	0.3	256 167
22	Oil-seeds and oleaginous fruits	33	45	7	—	44 115
23	Crude rubber (incl. synthetic and reclaimed)	1	1	1	—	4 4
24	Cork and wood	85	89	104	0.7	481 377
25	Pulp and waste paper	19	15	19	0.1	109 69
26	Textile fibres and their wastes (not manufactured into yarn or fabric)	126	193	246	1.6	908 746
27	Crude fertilizers (excl. those of Division 56) and crude minerals (excl. coal, petroleum and precious stones)	19	28	22	0.1	134 86
28	Metalliferous ores and metal scrap	3 731	3 670	3 566	22.9	19 946 14 466
29	Crude animal and vegetable materials, n.e.s.	17	16	17	0.1	90 70
	<i>Total Crude materials, inedible, except fuels</i>	<i>4 069</i>	<i>4 101</i>	<i>4 028</i>	<i>25.9</i>	<i>21 974 16 101</i>
3	Mineral fuels, lubricants and related materials					
32	Coal, coke and briquettes	2 818	2 983	2 650	17.0	20 719 11 532
33	Petroleum, petroleum products and related materials	805	794	1 031	6.6	5 043 3 476
34	Gas, natural and manufactured	720	545	714	4.6	3 830 2 727
	<i>Total Mineral fuels, lubricants and related materials</i>	<i>4 343</i>	<i>4 322</i>	<i>4 396</i>	<i>28.2</i>	<i>29 591 17 735</i>

— nil or rounded to zero (including null cells)

(a) Some SITC sections and divisions exclude commodities subject to a confidentiality restriction. These are included in Division 98. For more information see paragraph 26 of the Explanatory Notes.

(b) Per cent of total merchandise is calculated for the most recent month.

(c) The 'Major commodities' section lists commodities at the SITC Rev 4 3-digit level which are the most significant (by value) or are of particular interest. Abbreviated descriptors have been used. The list of 'Major commodities' is reviewed annually.

	Aug 2009	Sep 2009	Oct 2009	Per cent of total merchandise exports(b)	4 MONTHS ENDED OCTOBER	
					2008	2009
					\$m	\$m
SECTION AND DIVISION OF THE SITC						
4	Animal and vegetable oils, fats and waxes					
41	14	35	21	0.1	131	94
42	17	9	14	0.1	65	53
43	Fats and oils (processed), waxes and inedible mixtures or preparations, of animal or vegetable origin, n.e.s.					
	1	1	1	—	4	5
	<i>Total Animal and vegetable oils, fats and waxes</i>					
	32	45	36	0.2	201	151
5	Chemicals and related products, n.e.s.					
51	12	14	17	0.1	65	57
52	35	47	43	0.3	190	175
53	58	52	52	0.3	189	233
54	373	336	340	2.2	1 338	1 423
55	Essential oils and resinoids and perfume materials, toilet, polishing and cleansing preparations					
	52	48	53	0.3	206	205
56	55	72	42	0.3	490	204
57	22	23	22	0.1	116	90
58	32	33	30	0.2	120	137
59	85	82	83	0.5	373	333
	<i>Total Chemicals and related products, nes</i>					
	725	708	682	4.4	3 086	2 857
6	Manufactured goods classified chiefly by material					
61	23	20	20	0.1	104	82
62	12	16	17	0.1	93	63
63	11	15	15	0.1	56	55
64	53	53	53	0.3	239	222
65	25	26	26	0.2	129	103
66	53	92	73	0.5	282	272
67	65	74	86	0.5	689	286
68	838	710	842	5.4	4 391	3 120
69	103	87	103	0.7	387	389
	<i>Total Manufactured goods classified chiefly by material</i>					
	1 183	1 094	1 234	7.9	6 369	4 592
7	Machinery and transport equipment					
71	51	65	69	0.4	364	256
72	162	170	162	1.0	684	651
73	10	16	12	0.1	68	48
74	General industrial machinery and equipment, n.e.s. and machine parts, n.e.s.					
	152	165	140	0.9	657	604
75	76	85	82	0.5	422	323
76	Telecommunications and sound recording and reproducing apparatus and equipment					
	76	91	97	0.6	352	342
77	Electrical machinery, apparatus and appliances, parts (incl. non electrical counterparts of electrical domestic equip)					
	119	125	138	0.9	640	537
78	185	207	260	1.7	1 717	871
79	171	134	127	0.8	671	531
	<i>Total Machinery and transport equipment</i>					
	1 002	1 058	1 088	7.0	5 577	4 162

— nil or rounded to zero (including null cells)

(b) Per cent of total merchandise is calculated for the most recent month.

(a) Some SITC sections and divisions exclude commodities subject to a confidentiality restriction. These are included in Division 98. For more information see paragraph 26 of the Explanatory Notes.

	Aug 2009	Sep 2009	Oct 2009	Per cent of total merchandise exports(b)	4 MONTHS ENDED OCTOBER	
					2008	2009
					\$m	\$m
SECTION AND DIVISION OF THE SITC						
8	Miscellaneous manufactured articles					
81	Prefabricated buildings and sanitary, plumbing, heating and lighting fixtures and fittings, n.e.s.	13	9	12	0.1	49 45
82	Furniture and parts thereof; bedding, mattresses, mattress supports, cushions and similar stuffed furnishings	10	7	13	0.1	46 36
83	Travel goods, handbags and similar containers	3	3	4	—	10 11
84	Articles of apparel and clothing accessories	23	21	23	0.1	89 85
85	Footwear	5	4	3	—	18 16
87	Professional, scientific and controlling instruments and apparatus, n.e.s.	169	159	164	1.1	718 672
88	Photographic apparatus, equipment and supplies and optical goods, n.e.s., watches and clocks	27	27	25	0.2	122 107
89	Miscellaneous manufactured articles, n.e.s.	170	192	189	1.2	813 724
	<i>Total Miscellaneous manufactured articles</i>	<i>418</i>	<i>422</i>	<i>433</i>	<i>2.8</i>	<i>1 866 1 696</i>
9	Commodities and transactions not classified elsewhere in the SITC					
93	Special transactions and commodities not classified according to kind	152	135	188	1.2	526 637
95	Gold coin whether or not legal tender, and other coin being legal tender	19	78	33	0.2	167 143
96	Coin (excl. gold coin) not being legal tender	—	—	—	—	— —
97	Gold, non-monetary (excl. gold ores and concentrates)	817	1 296	1 106	7.1	5 390 4 040
98	Combined confidential items excl. some of SITC 280 (exports only) and some of SITCs 510 and 520 (imports only)	424	675	665	4.3	1 812 2 248
	<i>Total Commodities and transactions not classified elsewhere in the SITC</i>	<i>1 412</i>	<i>2 184</i>	<i>1 992</i>	<i>12.8</i>	<i>7 895 7 069</i>
	Total merchandise exports	15 144	15 712	15 567	100.0	84 896 61 700
	Balance of Payments Adjustments	-45	20	-22	. .	488 -93
	Goods Credits (exports) on a Balance of Payments Basis	15 099	15 732	15 545	. .	85 384 61 607

. . not applicable
 — nil or rounded to zero (including null cells)

(a) Some SITC sections and divisions exclude commodities subject to a confidentiality restriction. These are included in Division 98. For more information see paragraph 26 of the Explanatory Notes.
 (b) Per cent of total merchandise is calculated for the most recent month.

	Aug 2009	Sep 2009	Oct 2009	Per cent of total merchandise imports(b)	4 MONTHS ENDED OCTOBER	
					2008	2009
					\$m	\$m
MAJOR COMMODITIES						
333 Crude petroleum oils	1 045	1 030	855	4.8	7 042	4 345
334 Refined petroleum oils	659	1 134	1 059	5.9	5 366	3 750
542 Medicaments	544	618	679	3.8	2 390	2 588
641 Paper and paperboard	143	173	178	1.0	809	642
723 Civil engineering and contractors' plant and equipment	135	210	184	1.0	1 361	714
751 Office machines	161	172	176	1.0	696	697
752 Automatic data processing machines	429	402	471	2.6	1 976	1 867
761 Televisions	317	301	304	1.7	1 096	1 239
764 Telecommunications equipment	515	705	637	3.5	2 477	2 415
781 Motor vehicles for the transport of people	901	1 180	1 271	7.1	4 779	4 421
782 Motor vehicles for the transport of goods	327	481	506	2.8	2 340	1 656
784 Parts and accessories of motor vehicles	179	196	209	1.2	957	773
971 Gold, non-monetary	610	747	747	4.2	3 476	2 426

SECTION AND DIVISION OF THE SITC

0	Food and live animals					
00	Live animals other than fish, crustaceans, molluscs and aquatic invertebrates	8	4	7	—	31 26
01	Meat and meat preparations	46	50	37	0.2	164 184
02	Dairy products and birds' eggs	39	43	45	0.3	204 178
03	Fish (not marine mammals), crustaceans, molluscs and aquatic invertebrates, and preparations thereof	96	110	118	0.7	406 427
04	Cereals and cereal preparations	71	84	76	0.4	293 309
05	Vegetables and fruit	118	131	140	0.8	556 536
06	Sugars, sugar preparations and honey	24	30	24	0.1	84 104
07	Coffee, tea, cocoa, spices, and manufactures thereof	114	114	115	0.6	417 461
08	Feeding stuff for animals (excl. unmilled cereals)	26	67	33	0.2	215 223
09	Miscellaneous edible products and preparations	138	129	145	0.8	501 554
	<i>Total Food and live animals</i>	680	762	741	4.1	2 870 3 001
1	Beverages and tobacco					
11	Beverages	120	154	173	1.0	549 563
12	Tobacco and tobacco manufactures	18	26	21	0.1	64 87
	<i>Total Beverages and tobacco</i>	138	180	194	1.1	613 649
2	Crude materials, inedible, except fuels					
21	Hides, skins and furskins, raw	—	—	—	—	1 —
22	Oil-seeds and oleaginous fruits	3	4	2	—	21 14
23	Crude rubber (incl. synthetic and reclaimed)	11	11	14	0.1	83 46
24	Cork and wood	45	49	49	0.3	214 190
25	Pulp and waste paper	9	18	17	0.1	140 62
26	Textile fibres and their wastes (not manufactured into yarn or fabric)	12	12	15	0.1	49 52
27	Crude fertilizers (excl. those of Division 56) and crude minerals (excl. coal, petroleum and precious stones)	8	8	8	—	253 33
28	Metalliferous ores and metal scrap	69	28	26	0.1	235 136
29	Crude animal and vegetable materials, n.e.s.	24	27	29	0.2	105 104
	<i>Total Crude materials, inedible, except fuels</i>	181	159	160	0.9	1 101 639
3	Mineral fuels, lubricants and related materials					
32	Coal, coke and briquettes	1	1	9	0.1	7 12
33	Petroleum, petroleum products and related materials	1 747	2 193	1 950	10.9	12 674 8 232
34	Gas, natural and manufactured	140	135	142	0.8	686 571
	<i>Total Mineral fuels, lubricants and related materials</i>	1 888	2 329	2 101	11.7	13 366 8 815

— nil or rounded to zero (including null cells)

(a) Some SITC sections and divisions exclude commodities subject to a confidentiality restriction. These are included in Division 98. For more information see paragraph 26 of the Explanatory Notes.

(b) Per cent of total merchandise is calculated for the most recent month.

(c) The 'Major commodities' section lists commodities at the SITC Rev 4 3-digit level which are the most significant (by value) or are of particular interest. Abbreviated descriptors have been used. The list of 'Major commodities' is reviewed annually.

	Aug	Sep	Oct	Per cent	4 MONTHS	
	2009	2009	2009	of total	ENDED OCTOBER	
	\$m	\$m	\$m	merchandise	2008	2009
				imports(b)		
				%		
SECTION AND DIVISION OF THE SITC						
4	Animal and vegetable oils, fats and waxes					
41	Animal oils and fats	5	3	1	—	10 9
42	Fixed vegetable fats and oils, crude, refined or fractionated	42	42	34	0.2	192 160
43	Fats and oils (processed), waxes and inedible mixtures or preparations, of animal or vegetable n.e.s.	6	7	7	—	24 27
	<i>Total Animal and vegetable oils, fats and waxes</i>	53	52	42	0.2	225 196
5	Chemicals and related products, n.e.s.					
51	Organic chemicals	258	223	291	1.6	1 176 1 008
52	Inorganic chemicals	96	101	88	0.5	766 400
53	Dyeing, tanning and colouring materials	49	54	55	0.3	248 211
54	Medicinal and pharmaceutical products	685	751	824	4.6	2 921 3 168
55	Essential oils and resinoids and perfume materials; toilet, polishing and cleansing preparations	160	186	159	0.9	610 662
56	Fertilisers (excl. crude)	43	42	47	0.3	756 206
57	Plastics in primary forms	100	113	125	0.7	662 439
58	Plastics in non-primary forms	108	115	122	0.7	500 475
59	Chemical materials and products, n.e.s.	153	156	155	0.9	744 625
	<i>Total Chemicals and related products, n.e.s.</i>	1 653	1 743	1 866	10.4	8 383 7 193
6	Manufactured goods classified chiefly by material					
61	Leather, leather manufactures, and dressed furskins, n.e.s.	11	12	11	0.1	65 46
62	Rubber manufactures, n.e.s.	219	238	237	1.3	930 924
63	Cork and wood manufactures (excl. furniture)	46	48	52	0.3	240 192
64	Paper, paperboard and articles of paper pulp, of paper or of paperboard	213	249	256	1.4	1 097 938
65	Textile yarn, fabrics, made-up articles n.e.s., and related products	209	224	219	1.2	917 858
66	Non-metallic mineral manufactures, n.e.s.	193	240	248	1.4	992 890
67	Iron and steel	265	254	229	1.3	2 225 1 042
68	Non-ferrous metals	155	196	178	1.0	652 615
69	Manufactures of metals, n.e.s.	410	422	524	2.9	2 012 1 829
	<i>Total Manufactured goods classified chiefly by material</i>	1 722	1 882	1 955	10.9	9 130 7 333
7	Machinery and transport equipment					
71	Power generating machinery and equipment	302	429	462	2.6	1 872 1 504
72	Machinery specialised for particular industries	575	580	481	2.7	2 963 2 157
73	Metal working machinery	49	55	46	0.3	259 204
74	General industrial machinery and equipment, n.e.s. and machine parts, n.e.s.	936	1 070	1 082	6.0	3 869 4 115
75	Office machines and automatic data processing machines	662	635	719	4.0	3 058 2 883
76	Telecommunications and sound recording and reproducing apparatus and equipment	913	1 142	1 078	6.0	4 068 4 106
77	Electrical machinery, apparatus, appliances, parts (incl. non-elec. counterparts of electrical domestic equip)	746	806	780	4.3	3 497 3 165
78	Road vehicles (incl. air-cushion vehicles)	1 565	2 006	2 147	12.0	8 989 7 438
79	Transport equipment (excl. road vehicles)	77	161	101	0.6	1 950 487
	<i>Total Machinery and transport equipment</i>	5 826	6 885	6 897	38.4	30 525 26 059

— nil or rounded to zero (including null cells)

(b) Per cent of total merchandise is calculated for the most recent month.

(a) Some SITC sections and divisions exclude commodities subject to a confidentiality restriction. These are included in Division 98. For more information see paragraph 26 of the Explanatory Notes.

	Aug 2009	Sep 2009	Oct 2009	Per cent of total merchandise imports(b)	4 MONTHS ENDED OCTOBER		
					2008	2009	
					\$m	\$m	
SECTION AND DIVISION OF THE SITC							
8	Miscellaneous manufactured articles						
81	Prefabricated buildings; sanitary, plumbing, heating and lighting fixtures and fittings, n.e.s.						
	71	78	75	0.4	295	286	
82	Furniture, parts thereof; bedding, mattresses, mattress supports, cushions and similar stuffed furnishings						
	225	239	241	1.3	1 003	940	
83	Travel goods, handbags and similar containers						
	64	70	82	0.5	298	285	
84	Articles of apparel and clothing accessories						
	418	422	398	2.2	1 820	1 724	
85	Footwear						
	118	115	102	0.6	475	469	
87	Professional, scientific and controlling instruments and apparatus, n.e.s.						
	391	383	376	2.1	1 686	1 557	
88	Photographic apparatus, equipment and supplies and optical goods, n.e.s., watches and clocks						
	114	126	134	0.7	508	499	
89	Miscellaneous manufactured articles, n.e.s.						
	883	985	1 052	5.9	4 274	3 773	
	<i>Total Miscellaneous manufactured articles</i>	<i>2 284</i>	<i>2 418</i>	<i>2 460</i>	<i>13.7</i>	<i>10 360</i>	<i>9 534</i>
9	Commodities and transactions not classified elsewhere in the SITC						
93	Special transactions and commodities not classified according to kind						
	3	3	2	—	16	12	
95	Gold coin whether or not legal tender, and other coin being legal tender						
	—	—	—	—	2	2	
96	Coin (excl. gold coin), not being legal tender						
	—	—	2	—	—	2	
97	Gold, non-monetary (excl. gold ores and concentrates)						
	610	747	747	4.2	3 476	2 426	
98	Combined confidential items excl. some of SITC 280 (exports only) and some of SITCs 510 and 520 (imports only)						
	441	470	791	4.4	744	1 923	
	<i>Total Commodities and transactions not classified elsewhere in the SITC</i>	<i>1 054</i>	<i>1 221</i>	<i>1 542</i>	<i>8.6</i>	<i>4 239</i>	<i>4 365</i>
	Total merchandise imports	15 479	17 630	17 959	100.0	80 812	67 785
	Balance of Payments Adjustments	306	418	268	. .	863	1 275
	Goods Debits (imports) on a Balance of Payments Basis	15 785	18 048	18 227	. .	81 675	69 060

. . not applicable

— nil or rounded to zero (including null cells)

(a) Some SITC sections and divisions exclude commodities subject to a confidentiality restriction. These are included in Division 98. For more information see paragraph 26 of the Explanatory Notes.

(b) Per cent of total merchandise is calculated for the most recent month.

	EXPORTS				IMPORTS(b)				BALANCE OF MERCHANDISE TRADE	
	2008-09	Oct	4	4	2008-09	Oct	4	4	2008-09	4
		2009	months ended October 2008	months ended October 2009		2009	Months Ended October 2008	Months Ended October 2009		Months Ended October 2009
	\$m	\$m	\$m	\$m	\$m	\$m	\$m	\$m	\$m	\$m
Belgium	1 301	88	681	292	1 719	147	686	561	-418	-269
Brazil	1 483	142	892	319	1 041	52	560	200	442	120
Canada	1 549	119	536	452	2 437	139	987	595	-888	-143
China	39 326	3 159	12 514	13 248	37 044	3 352	13 103	12 523	2 282	725
Denmark	176	12	55	49	1 070	82	358	334	-894	-286
Egypt(c)	453	17	148	116	33	1	7	11	420	105
Fiji	374	30	140	113	160	9	55	40	215	73
Finland	595	31	324	83	978	57	392	216	-383	-133
France	1 721	83	729	265	4 653	367	1 830	1 375	-2 932	-1 111
Germany	2 198	130	847	517	11 106	947	4 004	3 619	-8 908	-3 102
Hong Kong (Sar of China)	3 192	210	954	821	1 424	103	536	424	1 767	397
India	15 421	1 331	5 992	4 857	2 114	195	703	621	13 306	4 236
Indonesia	4 295	349	1 634	1 362	5 038	325	1 952	1 525	-743	-163
Iran	661	16	58	46	95	4	75	31	567	15
Iraq	194	8	60	155	31	—	31	—	163	155
Ireland	134	10	52	44	2 399	224	771	786	-2 265	-742
Israel	262	13	127	61	715	53	265	182	-453	-121
Italy	1 556	69	705	307	5 338	356	1 910	1 591	-3 783	-1 284
Japan	52 764	2 983	19 861	11 747	17 842	1 619	6 661	5 881	34 922	5 866
Korea, Republic of	19 273	1 299	6 942	4 911	6 525	535	2 259	2 279	12 748	2 632
Kuwait	428	53	145	181	426	33	186	131	2	49
Malaysia	3 730	303	1 550	1 121	8 335	578	3 218	2 326	-4 605	-1 205
Mexico	902	36	315	237	1 324	101	459	386	-422	-149
Netherlands	3 202	113	1 303	555	1 771	143	652	490	1 431	65
New Zealand	8 549	744	3 350	2 837	7 050	606	2 824	2 273	1 500	564
Pakistan	478	48	134	218	181	11	54	46	296	171
Papua New Guinea	1 611	209	492	662	3 013	245	1 038	880	-1 402	-217
Philippines	1 409	138	569	409	605	45	286	157	804	252
Saudi Arabia	2 250	153	694	479	935	41	389	163	1 315	316
Singapore	5 522	465	2 082	1 959	13 445	1 025	5 563	3 524	-7 923	-1 565
South Africa	2 056	164	908	558	1 258	65	544	311	798	247
Spain	612	39	313	121	1 731	129	635	590	-1 118	-469
Sweden	566	21	307	136	2 441	158	930	669	-1 875	-533
Switzerland	660	16	69	76	2 481	205	840	844	-1 821	-768
Taiwan	8 126	431	3 095	2 041	4 089	318	1 612	1 101	4 037	939
Thailand	4 951	298	2 070	1 357	10 749	1 246	3 735	4 435	-5 799	-3 077
Turkey	811	8	473	73	507	34	163	154	304	-81
United Arab Emirates	3 604	212	1 537	623	1 924	122	846	812	1 680	-189
United Kingdom	11 509	518	3 514	1 907	9 024	537	3 529	1 949	2 485	-42
United States of America	11 600	782	4 536	3 284	25 334	1 879	9 007	7 205	-13 734	-3 922
Viet Nam	1 234	134	347	486	4 399	246	2 066	1 003	-3 165	-517
Other Countries(b)	10 070	586	3 843	2 617	16 691	1 625	5 093	5 540	-6 621	-2 923
Total	230 813	15 567	84 896	61 700	219 478	17 959	80 812	67 785	11 335	-6 085
APEC	169 405	11 743	61 479	47 269	151 754	12 548	56 572	47 507	17 651	-239
ASEAN	21 286	1 700	8 296	6 743	43 636	3 496	17 460	13 304	-22 350	-6 560
Developing Countries	124 493	9 189	44 571	36 768	106 787	8 848	40 502	34 066	17 706	2 702
Least Developed Countries	2 144	127	585	582	281	23	79	91	1 862	491
European Union(d)	24 044	1 144	9 065	4 391	45 401	3 367	16 824	13 007	-21 357	-8 617
OECD	120 057	7 123	45 060	27 993	110 061	8 562	40 459	32 911	9 995	-4 918

— nil or rounded to zero (including null cells)

(a) See Time series spreadsheets for details of all countries.

(b) From September 2008 imports data with confidentiality restrictions 'no commodity details' or 'no value details' are included in Other countries.

(c) Exports of Alumina to Egypt are excluded from country total and included in the 'Other Countries' category.

(d) The European Union includes 27 member countries.

	4 MONTHS ENDED OCTOBER			
	2008-09	Oct 2009	2008	2009
	\$m	\$m	\$m	\$m
.....				
EXPORTS (a)				
New South Wales	38 767	2 510	13 452	10 384
Victoria	20 375	1 528	7 538	5 915
Queensland	56 541	3 297	22 292	13 692
South Australia	9 527	655	3 581	2 678
Western Australia	86 888	6 133	31 463	23 535
Tasmania	3 506	239	1 207	910
Northern Territory	6 292	450	2 197	1 567
Australian Capital Territory	11	3	5	4
State not available for publication(b)	797	43	355	185
Re-exports	8 108	707	2 806	2 831
Total	230 813	15 567	84 896	61 700
.....				
IMPORTS				
New South Wales	78 997	6 636	28 594	25 443
Victoria	56 457	4 676	21 749	17 757
Queensland	33 964	2 562	13 807	10 227
South Australia	6 867	543	2 665	2 093
Western Australia	33 121	2 435	11 504	9 031
Tasmania	956	75	420	259
Northern Territory	4 347	241	1 444	1 048
Australian Capital Territory	7	—	1	3
State not available for publication(c)	4 761	791	630	1 923
Total	219 478	17 959	80 812	67 785

— nil or rounded to zero (including null cells)

(a) State in which the final stage of production or manufacture occurs.

(b) Exports of Alumina to Bahrain, Egypt and Iceland are excluded from the state totals and included in 'State not available for publication'.

(c) From September 2008 imports data with confidentiality restrictions 'no commodity details' or 'no value details' are included in State not available for publication.

PERIOD AVERAGE EXCHANGE RATES(a), Per Australian dollar

<i>Period</i>	<i>United States dollar</i>	<i>UK pound sterling</i>	<i>Euro</i>	<i>Japanese yen</i>	<i>Special Drawing Right</i>	<i>Trade-weighted index of value of the A\$(b)</i>
FINANCIAL YEAR						
2006-07	0.7863	0.4066	0.6018	93.21	0.5251	64.8
2007-08	0.8968	0.4479	0.6099	98.63	0.5664	69.7
2008-09	0.7456	0.4621	0.5414	73.99	0.4869	60.2
MONTHS						
2008						
August	0.8810	0.4668	0.5890	96.33	0.5555	68.6
September	0.8205	0.4558	0.5700	87.49	0.5271	64.9
October	0.6894	0.4070	0.5173	69.20	0.4542	56.1
November	0.6557	0.4279	0.5155	63.55	0.4421	54.4
December	0.6690	0.4480	0.4973	61.02	0.4407	54.6
2009						
January	0.6784	0.4678	0.5095	61.37	0.4478	55.4
February	0.6490	0.4503	0.5074	59.97	0.4386	54.2
March	0.6646	0.4680	0.5093	64.92	0.4483	56.0
April	0.7122	0.4846	0.5398	70.24	0.4773	59.1
May	0.7626	0.4954	0.5596	73.72	0.5022	61.7
June	0.8023	0.4898	0.5721	77.39	0.5194	64.2
July	0.8040	0.4913	0.5709	75.96	0.5180	64.0
August	0.8344	0.5047	0.5852	79.15	0.5349	66.0
September	0.8611	0.5275	0.5915	78.74	0.5461	67.2
October	0.9090	0.5613	0.6130	82.03	0.5716	70.0

(a) These exchange rates and the trade-weighted index are derived using rates provided by the Reserve Bank of Australia in respect of each trading day.

(b) May 1970 = 100. The Trade-weighted index is reweighted annually on 1 October and on special occasions as required.

	2006-07	2007-08	2008-09	Apr 2009	May 2009	Jun 2009	Jul 2009	Aug 2009	Sep 2009
	\$m	\$m	\$m	\$m	\$m	\$m	\$m	\$m	\$m
BALANCE									
On goods and services	—	—	—	—	—	—	—	—	—
CREDITS									
Total goods and services	—	—	—	—	—	—	—	—	—
Total goods	—	—	—	—	—	—	—	—	—
Rural goods	—	—	—	—	—	—	—	—	—
Non-rural goods	—	—	—	—	—	—	—	—	—
Net exports of goods under merchanting	—	—	—	—	—	—	—	—	—
Non-monetary gold	—	—	—	—	—	—	—	—	—
Total services	—	—	—	—	—	—	—	—	—
DEBITS									
Total goods and services	—	—	—	—	—	—	—	—	—
Total goods	—	—	—	—	—	—	—	—	—
Consumption goods	—	—	—	—	—	—	—	—	—
Capital goods	—	—	—	—	—	—	—	—	—
Intermediate and other merchandise goods	—	—	—	—	—	—	—	—	—
Non-monetary gold	—	—	—	—	—	—	—	—	—
Total services	—	—	—	—	—	—	—	—	—

— nil or rounded to zero (including null cells)

EXPLANATORY NOTES

INTRODUCTION

1 This publication presents preliminary estimates of Australia's international trade in goods and services on a balance of payments basis (Tables 1–11 and 17) and merchandise import and export statistics on a recorded trade basis (Tables 12–15). In addition, Table 16 Exchange rates and trade-weighted indexes are derived by using exchange rates and indexes provided by the Reserve Bank.

2 Merchandise trade statistics on a recorded trade basis are compiled from information submitted by exporters and importers or their agents to the Australian Customs and Border Protection Service (Customs). Adjustments for coverage, timing and valuation are made to recorded trade data to convert them to a balance of payments basis. The services data are sourced from the quarterly Survey of International Trade in Services and a range of administrative data and indicator series.

3 More comprehensive quarterly estimates of Australia's trade in goods and services, together with comprehensive details of Australia's balance of payments are included in the quarterly publication, *Balance of Payments and International Investment Position, Australia* (cat. no. 5302.0). Detailed monthly statistics on merchandise trade are available in Time Series Spreadsheets on the ABS website or by subscription to tailored services. More information on the *International Trade in Services by country, by state and by detailed services category* are available on a financial year basis (cat. no. 5368.0.55.003) with the September issue of this publication and calendar year basis (cat. no. 5368.0.55.004) with the March issue of this publication.

CONCEPTS, SOURCES AND METHODS

4 The conceptual framework used in compiling Australia's merchandise trade statistics can be found in *International Merchandise Trade, Australia: Concepts, Sources and Methods, 2001* (cat. no. 5489.0).

5 The conceptual framework used in compiling Australia's balance of payments statistics is based on the *International Monetary Fund's Balance of Payments and International Investment Position Manual Sixth Edition* (BPM6). Descriptions of the underlying concepts and structure of the balance of payments and the sources, methods and terms used in compiling the estimates are presented in *Balance of Payments and International Investment Position, Australia: Concepts, Sources and Methods, 1998* (cat. no. 5331.0). The current version of this document reflects the international standards prior to BPM6. A revised Concepts, Sources and Methods publication is scheduled for release in late 2010. The *Information paper: Implementation of revised international statistical standards in the ABS National and International Accounts* (cat. no. 5310.0.55.002) describes the key changes introduced with BPM6.

6 To bring merchandise trade statistics on a recorded trade basis to a balance of payments basis, timing adjustments are made to ensure that the transaction is recorded in the period in which ownership changed, rather than in the period in which the transaction was recorded by Customs or the period in which the goods arrived in/departed from an Australian port. Adjustments are also made to account for the change of ownership of goods not included in merchandise trade statistics. Chapter 6 of cat. no. 5331.0 provides more detail on the relationship between statistics on international merchandise trade on a recorded trade basis and on a balance of payments basis.

7 Recorded trade exports data presented for recent months in tables 12–15 of this publication are based on information initially reported by exporters to Customs. At the time of initial reporting to Customs the final prices may not be known for some commodities. Therefore, the information recorded for recent months for commodities like iron ore and coal can include a variety of prices including previous or current contract prices and the prevailing spot prices. Newly negotiated contract prices may not be fully reflected in the data first reported to Customs, and to compensate for this, the Balance of Payments series may reflect adjusted price levels.

EXPLANATORY NOTES *continued*

CONCEPTS, SOURCES AND METHODS *continued*

8 The Concepts, Sources and Methods publications and information papers are available to download for free from the ABS website. Select *Statistics*, then select *By Catalogue Number*, and then the catalogue numbers as above.

CLASSIFICATIONS

9 The merchandise trade data on a recorded trade basis are presented using the following commodity classifications:

- the Harmonised System 2007 (available on request)
- the Standard International Trade Classification (SITC Revision 4)
- the Classification by Broad Economic Categories (BEC)
- the industry classification: Australian and New Zealand Standard Industrial Classification, 2006 (ANZSIC 06).

10 The Balance of Payments Goods and Services series are presented according to three classifications with the goods classifications derived from SITC Revision 4 and BEC. The classifications are:

- for goods:
 - the Balance of Payments Commodities for Exports (BoPCE)
 - the Balance of Payments Broad Economic Categories for Imports (BoPBEC),
- for services:
 - the Extended Balance of Payments Services Classification (EBOPS).

ACCURACY, RELIABILITY AND REVISIONS

11 While every effort is made to ensure the accuracy and reliability of estimates, most series are subject to revision as more complete and accurate information becomes available. Care should be exercised in the use and interpretation of estimates in this publication. The transactions occurring in international trade in goods and services are of many different kinds, and therefore the compilation of trade estimates entails the use of a very wide range of statistical data of varying degrees of accuracy and timeliness. For further information on the monthly services series, see paragraph 25.

12 The revisions are applied differently for merchandise trade and Balance of Payments series. Each month, merchandise trade data are revised for the previous six months to incorporate latest available data.

13 For the Balance of Payments Goods and Services series, in original terms, no revisions are applied in the July, October, January or April issues. This is to ensure the monthly series align with the comparable series in the quarterly publication. In the September issue revisions can be applied to the four previous financial years. In other issues revisions can be applied to the previous and current financial years to incorporate the latest available survey and administrative data.

14 In seasonally adjusted and trend terms, revisions may occur at any time point but tend to focus on the most recent estimates. Please also refer to paragraphs 17 (seasonal adjustment) and 19 (trend estimates) below.

SIGN CONVENTION

15 In keeping with BPM6 conventions, balance of payments basis credit entries are shown with an implied positive sign and debit items are shown as negative entries. For statistics on a recorded trade basis, both imports and exports are shown without sign. The calculation of percentage changes on balance of payments debit items are made without regard to sign. References to balance of payments debit items in Key Figures, Key Points, and Analysis and Comments are also made without regard to sign.

SEASONALLY ADJUSTED AND TREND ESTIMATES

16 The estimates of international trade in goods and services on a balance of payments basis are seasonally adjusted, however the merchandise exports and imports statistics on a recorded trade basis are not. Monthly original estimates are volatile, being subject to calendar-related and large irregular influences. Seasonally adjusted estimates are derived by estimating and removing from the original series systematic calendar related effects, such as seasonal (e.g. Christmas), trading day and moving holiday (e.g. Easter)

EXPLANATORY NOTES *continued*

SEASONALLY ADJUSTED AND TREND ESTIMATES *continued*

influences. Seasonal adjustment does not aim to remove the irregular or non-seasonal influences which may be present in any particular month. These irregular influences may reflect both random economic events and difficulties of statistical recording.

17 The seasonally adjusted statistics in this publication use the concurrent seasonal adjustment technique and Autoregressive Integrated Moving Average (ARIMA) modelling to estimate factors for the current and previous months. Under concurrent seasonal adjustment, the estimates of seasonal factors are fine tuned as new or revised original estimates become available each period. The seasonally adjusted estimates are subject to revisions at each reference month as the estimates of seasonal factors are improved.

18 ARIMA modelling relies on the characteristics of the series being analysed to project future period data. ARIMA modelling is used on a case-by-case basis where it results in reduced revisions to seasonally adjusted series when subsequent data become available. The projected values are temporary, intermediate values, that are only used internally to improve the estimation of the seasonal factors. The projected data do not affect the original estimates and are discarded at the end of the seasonal adjustment process. The ARIMA model is assessed as part of the annual review and, following the 2009 annual review, 40 of the 45 directly seasonally adjusted trade in goods and services time series use an ARIMA model.

19 The month-to-month movements of the seasonally adjusted estimates may not be reliable indicators of underlying behaviour because they include irregular or non-seasonal movements. Trend estimates reduce the effect of these movements as they are derived by applying a 13-term Henderson moving average to the seasonally adjusted series. The 13-term Henderson moving average (like all Henderson averages) is symmetric, but as the end of a time series is approached, asymmetric forms of the average are applied. While the asymmetric weights enable trend estimates for recent months to be produced, it does result in revisions to the estimates for the most recent six months as additional observations become available. Revisions to trend estimates can also occur because of revisions to the original data and as a result of the re-estimation of the seasonal factors. Trend estimates should be used with caution, especially around the time of unusual influences, until these have been appropriately taken into account.

20 Information papers and articles on time series methods are available on the ABS website:

- for seasonal adjustment methods, see *Information Paper: An Introductory Course on Time Series Analysis, Jan 2005* (cat. no. 1346.0.55.001) and *Time Series Analysis Frequently Asked Questions, 2003* (cat. no. 1346.0.55.002)
- for ARIMA modelling, see *Feature article: Use of ARIMA modelling to reduce revisions* in the October 2004 issue of *Australian Economic Indicators* (cat. no. 1350.0)
- for trend estimates methods, see *Information Paper: A Guide to Interpreting Time Series – Monitoring Trends* (cat. no. 1349.0)
- alternatively contact the Assistant Director, Time Series Analysis on (02) 6252 6345 or e-mail <time.series.analysis@abs.gov.au>.

ECONOMIC TERRITORY

21 In accordance with BPM6 definitions, Australia's economic territory, on a balance of payments basis, is the area under the effective control of the Australian government. It includes the land area, airspace, territorial waters, including jurisdiction over fishing rights and rights to fuels and minerals. Australian economic territory also includes territorial enclaves in the rest of the world. These are clearly demarcated areas of land, located in other countries and which are owned or rented by the Australian government for diplomatic, military, scientific or other purposes. Specifically, the economic territory of Australia consists of:

- Geographic Australia which includes Cocos (Keeling) Islands and Christmas Island;

EXPLANATORY NOTES *continued*

ECONOMIC TERRITORY

continued

- Norfolk Island;
- Australian Antarctic Territory;
- Heard Island and McDonald Islands;
- Territory of Ashmore Reef and Cartier Island;
- Coral Sea Islands;
- Australia's territorial enclaves overseas; and
- the Joint Petroleum Development Area (joint territory between Australia and East Timor (Timor-Leste)).

22 Because of administrative complexities and measurement difficulties, Norfolk Island transactions with the rest of the world will not always be captured in all relevant Balance of Payments statistics. Most of the transactions involving Norfolk Island are not material to Australia's trade performance and not capturing these transactions will not distort these statistics. However, any significant transactions will be identified and included in the relevant statistics.

COMMODITY BREAKDOWN OF GOODS

23 For details of the classifications used to present goods exports (credits) and imports (debits) on a balance of payments basis, see tables 6.6 and 6.7, respectively, in *Balance of Payments and International Investment Position, Australia: Concepts, Sources and Methods*, 1998 (cat. no. 5331.0).

24 The recorded trade statistics shown in tables 12 and 13 are classified by the Standard International Trade Classification (SITC). Imports and exports of goods at a more detailed level are available from the Time Series spreadsheets on the ABS website. All data from July 2005 are presented according to SITC Rev 4 and data prior to July 2005 are presented according to SITC Rev 3. For details refer to the 'Classifications and Standards Update' in the July 2008 issue of this publication.

MONTHLY SERVICES SERIES

25 Monthly indicators for many of the services components that are only surveyed quarterly are not available. Monthly estimates for the freight and other transportation components of services credits in table 9 are derived by dividing the quarterly estimate by three. Freight debits are derived directly from imports data for the reference month as a difference between total merchandise cost, insurance and freight (CIF) and free on board (FOB), adjusted to reflect timing and processing adjustments. For freight credits and other transportation credits and debits, estimates are derived by extrapolating the last quarter's data by an average of movements for the same quarter over the three previous years, and then dividing the estimate by three. Similarly other services estimates are derived by extrapolating the last quarter's data by an average of movements for the same quarter over the previous three years, and then dividing the estimate by three.

CONFIDENTIALITY OF MERCHANDISE TRADE STATISTICS

26 The release of statistics for certain merchandise trade commodities is restricted in order to prevent the identification of the activities of an individual business, where this is requested by the business concerned. These restrictions do not affect the total value of exports and imports, but they can affect statistics at the country, state and commodity levels. Imports data that have the confidentiality restrictions 'No commodity details' or 'No value details' are aggregated into a single confidential commodity code. For data prior to September 2008, these data are added back into the appropriate state total and country total (i.e. these totals show the correct level of trade). From September 2008 these confidential data are not added back. Instead the confidential data are published as 'No country details' in the country totals and 'State not available for publication' in the state totals. Therefore, country and state totals from September 2008 may not represent the actual amount of trade in each country/state but only the trade in commodities without a 'No commodity details' or 'No value details' restriction. For information on the confidentiality restrictions applied to the merchandise trade statistics in this publication, refer to the current issue of *International merchandise trade: Confidential Commodities List (CCL)* (cat. no. 5372.0.55.001).

EXPLANATORY NOTES *continued*

TOURISM RELATED SERVICES

27 The tourism related services memorandum items provide timely indicators of the movements in tourism related activities, not an absolute measure of the level of these activities. The tourism related indicator has been derived by combining total travel services (business, education-related and other personal travel) and passenger transportation services (which includes agency fees and commissions for air transport).

SERVICES BY STATE AND BY PARTNER COUNTRY

28 Annual services data by state, by country and detailed services are released twice yearly. Calendar year data are usually released with the March issue of this publication and financial year data are usually released with the September issue. Refer to Time series data for details.

29 Services credits are classified by the state of provision, while services debits are classified by the state of consumption. The state allocations for transportation, travel, postal and courier, and telecommunication services are based on a number of indicators including merchandise trade statistics by state, overseas passenger arrivals and departures by state of clearance and data provided by the Department of Immigration and Citizenship. The allocation for other services (about 25% of all trade in services) is primarily based on the location of the business reporting the information, which serves as a proxy for the state of provision/consumption of that service. The data should be used with care but are considered suitable for analysis over time.

30 A comprehensive explanation of the data sources used and the methodology applied in the compilation of partner country statistics is provided in Chapter 17 of *Balance of Payments and International Investment Position, Australia – Concepts, Sources and Methods* (cat. no. 5331.0). Approximately 7% of total services credits and 5% of total services debits for both 2007–08 and 2008–09 were either confidential, or unable to be allocated to individual countries.

ABS DATA AVAILABLE

31 More detailed balance of payments and recorded merchandise trade data, including forward seasonal factors are available as time series spreadsheets or data cubes from the ABS web site. Merchandise trade data by commodity, country and state that are not on the ABS web site may be available on request. Inquiries should be made to the National Information and Referral Service as shown on the back of this publication.

RELATED PRODUCTS AND PUBLICATIONS

32 Users may also wish to refer to the following publications which can be downloaded free of charge from the ABS web site by using the 'Statistics' tab and selecting the relevant catalogue number:

- *Balance of Payments and International Investment Position, Australia* (cat. no. 5302.0) – issued quarterly
- *International Merchandise Imports, Australia* (cat. no. 5439.0) – issued monthly
- *International Trade Price Indexes, Australia* (cat. no. 6457.0) – issued quarterly
- *Balance of Payments and International Investment Position, Australia: Concepts, Sources and Methods* (cat. no. 5331.0)
- *Information Paper: Quality of Australian Balance of Payments Statistics* (cat. no. 5342.0)
- *International Merchandise Trade, Australia: Concepts, Sources and Methods* (cat. no. 5489.0)
- *A Guide to Australian Balance of Payments and International Investment Position Statistics* (cat. no. 5362.0.55.001).

33 Current publications and other products released by the ABS are available from the Statistics tab on the ABS web site. The ABS also issues a daily *Release Advice* on the web site which details products to be released in the week ahead. A *foreign trade theme page* and a *balance of payments theme page* are available on the ABS website. Select *Themes – Economy – Foreign Trade* or *Balance of Payments*. This page provides direct links to all foreign trade and balance of payments related data and publications, recent changes and

EXPLANATORY NOTES *continued*

RELATED PRODUCTS AND
PUBLICATIONS *continued*

forthcoming events, links to relevant web sites and a range of other information about the Australian International Accounts.

ROUNDING

34 Where figures have been rounded, discrepancies may occur between sums of the component items and totals. Percentage movements are calculated from data at the level of precision presented in this publication (i.e. \$m) except for international merchandise trade tables.

ABBREVIATIONS

\$b billion (thousand million) dollars
\$m million dollars
ABS Australian Bureau of Statistics
APEC Asia Pacific Economic Co-operation
ASEAN Association of South-East Asian Nations
n.e.s. not elsewhere specified
n.i.e. not included elsewhere
OECD Organisation for Economic Co-operation and Development
SAR Special Administrative Region
SITC Standard International Trade Classification

APPENDIX RELATED ARTICLES

<i>Article</i>	<i>Source(a)</i>	<i>Issue</i>
Investment		
Foreign ownership of equity	5302.0	Sep qtr 2007
Kangaroo bonds	1301.0	2006
Foreign currency exposure	5308.0	Mar qtr 2005
Gross external debt	5302.0	Sep qtr 2003
Balance of payments		
International comparison of balance of payments statistics	(b) 5363.0	1998–99
Merchandise trade		
Characteristics of Australian Exporters	5368.0.55.006	2007–08
Export and import invoice currencies, 2006	5368.0	Dec 2007
100 years of international trade statistics	5368.0	Oct 2007
New methodology for deriving counts of Australian exports	5368.0	Feb 2006
Australia's Importers, 2003–04	5368.0	Nov 2004
Australia's Exporters, 2003–04	5368.0	Oct 2004
Australia's trade with the USA	5368.0	Mar 2004
Foreign ownership of Australian exporters and importers	5496.0.55.001	2002–03
Major commodities traded by Australia, 1991 to 2000	(b) 5422.0	Dec qtr 2000
Trade in services		
International trade in services by partner country, 2006, preliminary	5368.0	Dec 2006
Changes to International trade in services statistics, August 2006	5368.0	Aug 2006
Changes to International trade in services travel statistics	5368.0	Aug 2005
Finance		
Impact of the farm season on Australian production in 2002–03 and 2003–04	1301.0	2005
Recent trends in construction and first home buyers finance	5609.0	Mar 2002
Household sector data in the financial accounts	5232.0	Mar qtr 2002
Technical information		
Implementation of new international statistical standards in ABS National and International Accounts, September 2009	5310.0.55.002	Oct 2009
Estimation of Workers' Remittances based on Balance of Payments and International Investment Position Manual, Sixth Edition	5302.0.55.003	Sep 2009
Impact of revised international standards on monthly International Trade in Goods and Services	5368.0.55.014	Aug 2009
Changes to International Trade in Goods Statistics - Countries and Ports	5368.0.55.013	Jul 2009
Revisions to international standards in quarterly Balance of Payments and International Investment Position statistics from September 2009	5302.0.55.002	2009
Revisions to international standards in monthly international trade in goods and services statistics from August 2009	5368.0.55.012	2009
Changes to International Trade in Goods Industry Statistics, July 2009	5368.0.55.011	Dec 2008
Technical note 1 - Income on debt	5302.0	Jun qtr 2008
Technical note 2 - Use of CDI data	5302.0	Jun qtr 2008
Impact of introducing Revision 4 of the Standard International Trade Classification	5368.0.55.010	2008
Changes to international trade statistics July 2008	5368.0.55.009	2007–08
Introduction of revised international standards in ABS economic statistics in 2009	5310.0.55.001	2007
Changes on 1 January 2007 to Statistical Codes in the AHECC and the Customs Tariff	1233.0.55.001	Nov 2006
ABS implementation in January 2007 of revisions to international trade classifications, 2007	5368.0.55.005	Jun 2006
Revised treatment of Goods for Processing in Merchandise Trade and Balance of Payments Statistics	5368.0	May 2006
Impact of Customs and ABS changes on import statistics from October 2005	5439.0	Oct 2005
ABS management of the impact of the implementation of the imports component of the New Customs System	5439.0	Aug 2005
Changes to country and port classifications	5368.0	May 2003
Implementation of New Customs Systems	5368.0	Aug 2004
The effect of customs changes on export statistics	5422.0	Jun qtr 2002
Data confidentiality	5422.0	Dec qtr 1999

- (a) In the ABS web site home page, select Statistics; By Catalogue Number; and click on the specified catalogue number and issue. Note: in some instances, a particular issue of the publication can be found in the Past & Future Releases page of the catalogue.
- (b) This article can be found in pdf format by referring to the Downloads page of the specified issue of this publication on the ABS web site.

FOR MORE INFORMATION . . .

INTERNET **www.abs.gov.au** the ABS website is the best place for data from our publications and information about the ABS.

INFORMATION AND REFERRAL SERVICE

Our consultants can help you access the full range of information published by the ABS that is available free of charge from our website. Information tailored to your needs can also be requested as a 'user pays' service. Specialists are on hand to help you with analytical or methodological advice.

PHONE 1300 135 070

EMAIL client.services@abs.gov.au

FAX 1300 135 211

POST Client Services, ABS, GPO Box 796, Sydney NSW 2001

FREE ACCESS TO STATISTICS

All statistics on the ABS website can be downloaded free of charge.

WEB ADDRESS www.abs.gov.au